



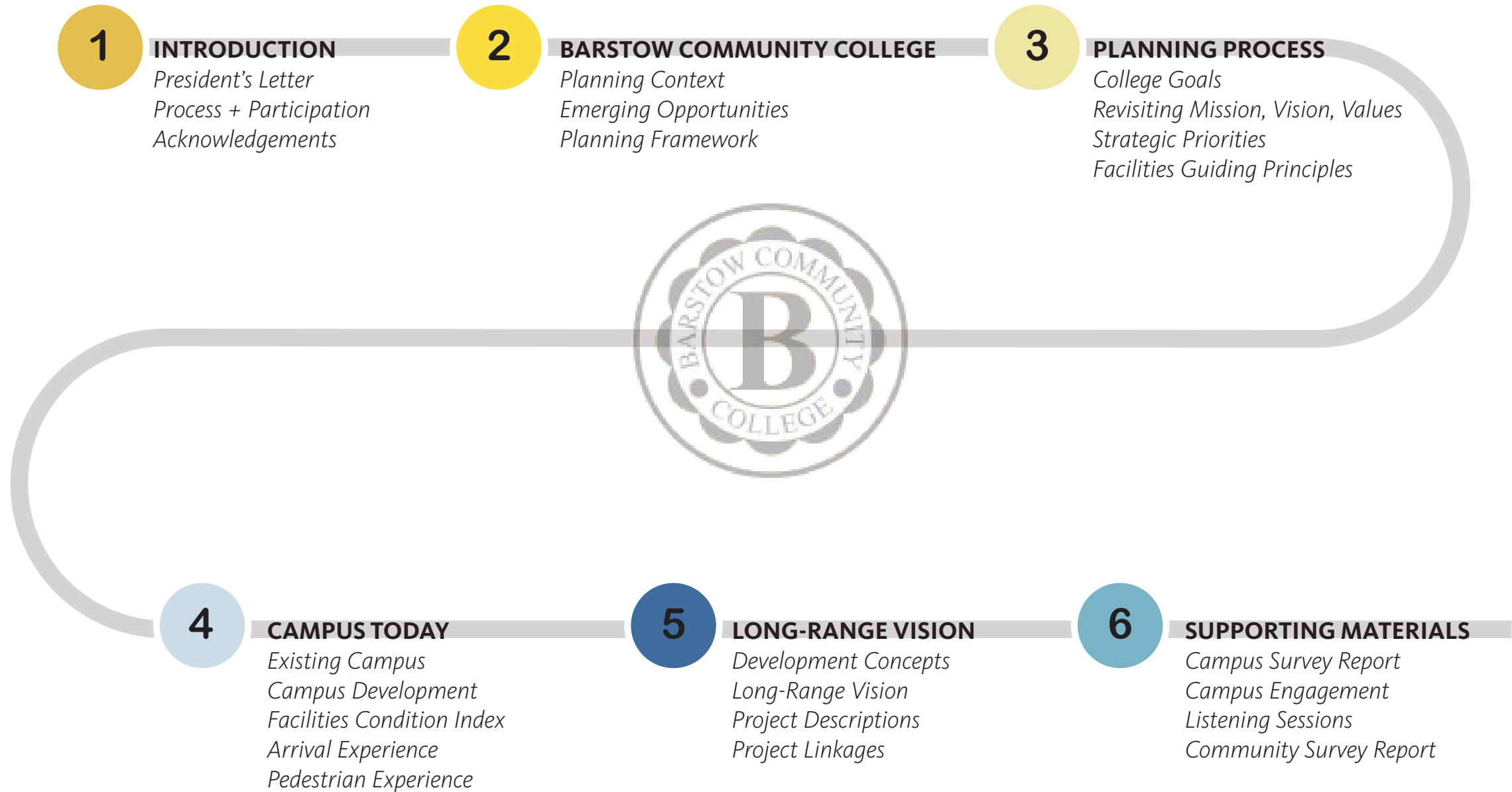
# 2023

COMPREHENSIVE

*Educational + Facilities Plan*

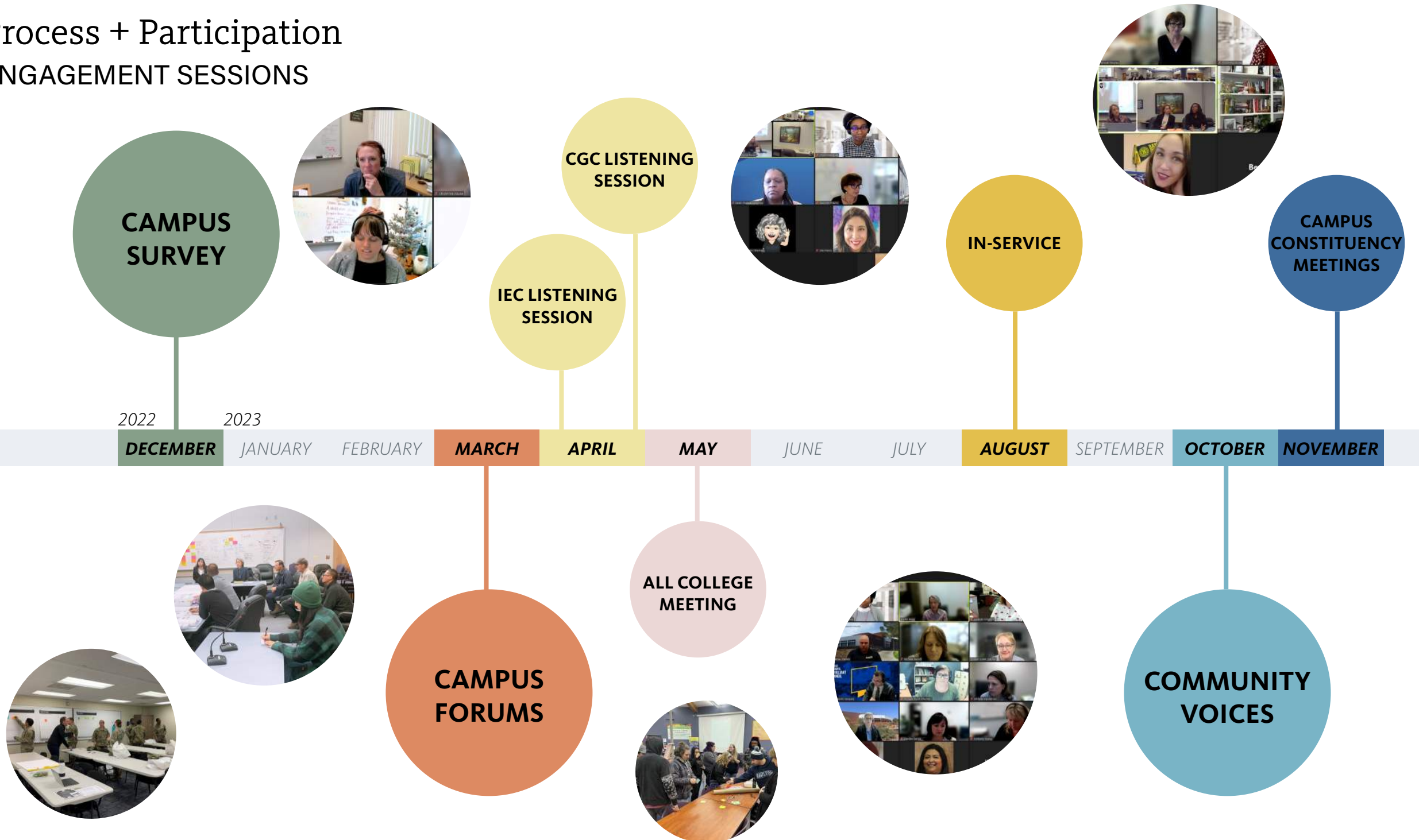
Final Draft | February 21, 2024

# Table of Contents



# Process + Participation

## ENGAGEMENT SESSIONS



# 2

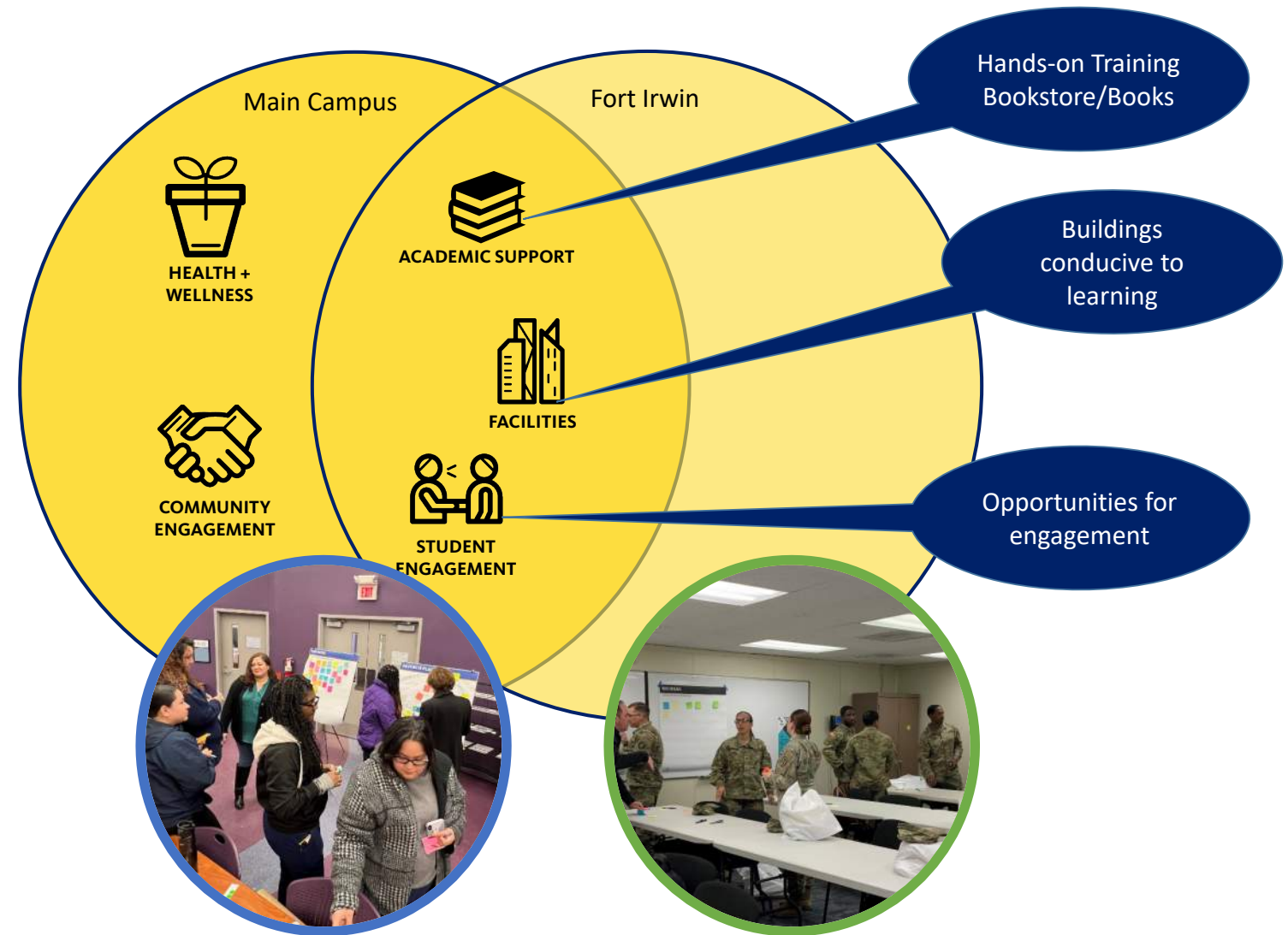
Planning Context  
Emerging Opportunities  
Development of Framework

## BARSTOW COMMUNITY COLLEGE



# Development of Framework

The development of the Planning Framework entailed synthesizing information from listening sessions held at the Main Campus, Fort Irwin, and Online. Additionally, feedback obtained from the Mission, Vision, and Values listening sessions, as well as input gathered through online campus and community surveys, were integrated into the framework. Detailed reports for these components can be found in the Supporting Materials section.



# Listening Sessions

Campus members were invited to share their evaluation of Barstow Community College and their recommendations for the College's focus in the coming decade in a Campus Forum in January 2023 and Campus Survey in March 2023. These participants were members of advisory committees, students, faculty, and staff who came together to share their experience with Barstow Community College.

During the listening session, participants were asked to describe BCC in one word. The word cloud on the next page was generated in real time, with “welcoming,” “helpful,” “opportunity,” and “professional” being the main descriptors.

Also during the listening sessions, participants were asked for ideas to improve the campus. This resulted in five major themes shown in “100 Ideas to Improve BCC;” (1) health and wellness, (2) academic support, (3) facilities, (4) community engagement and (5) student engagement.



# Listening Sessions

## 100 IDEAS TO IMPROVE BCC



### HEALTH + WELLNESS

- Outdoor seating and walkways
- Coffee Shop / Cafe
- Outdoor activities



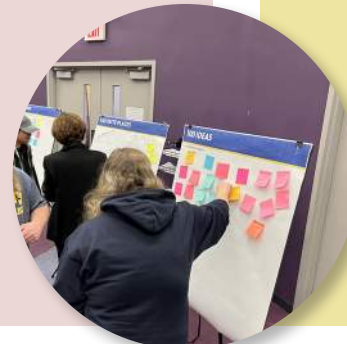
### ACADEMIC SUPPORT

- More majors/ programs
- Partnerships with businesses
- More in-person classes



### FACILITIES

- Building expansions
- On-campus childcare/daycare



### COMMUNITY ENGAGEMENT

- More events engaging campus with Barstow community
- Develop campus program partnerships with Barstow businesses



### STUDENT ENGAGEMENT

- New/improved student lounges
- More in-person activities for students
- More events

# 3

Planning Process  
Revisiting Mission, Vision, Values  
College Goals  
Strategic Priorities  
Facilities Planning Principles

## PLANNING PROCESS





# Vision

*Barstow Community College will be a hub of innovation and educational excellence, fostering a culture of growth, partnership, and inclusion as the premier college of the California High Desert.*



# Mission

Barstow Community College is committed to providing an equitable, accessible, and affordable education to its diverse student body, including local, military, distance education, and historically marginalized student populations. Through a variety of high-quality and comprehensive degree, certificate, and job skills training programs, we provide holistic student support with clear and diverse educational pathways that provide students with life-long learning and networking opportunities, critical thinking skills, and success in a globalized world.



# Values

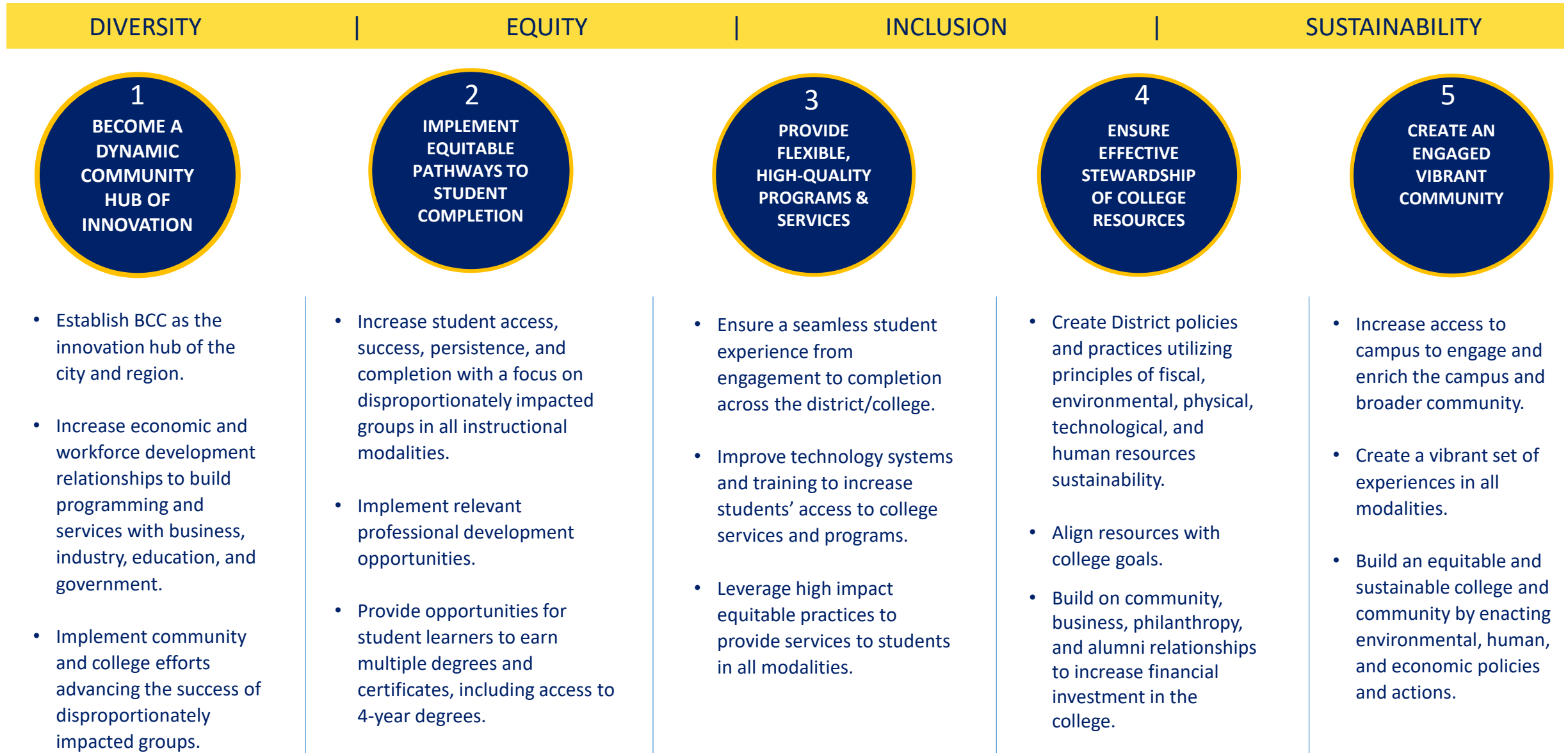
We are **VIKINGS!**

- V** *Vision for the Future*
- I** *Innovation and Collaboration*
- K** *Kindness and Integrity*
- I** *Inclusivity and Equity-minded Action*
- N** *Nurturing Community*
- G** *Growth and Improvement*
- S** *Superior Service and Support*



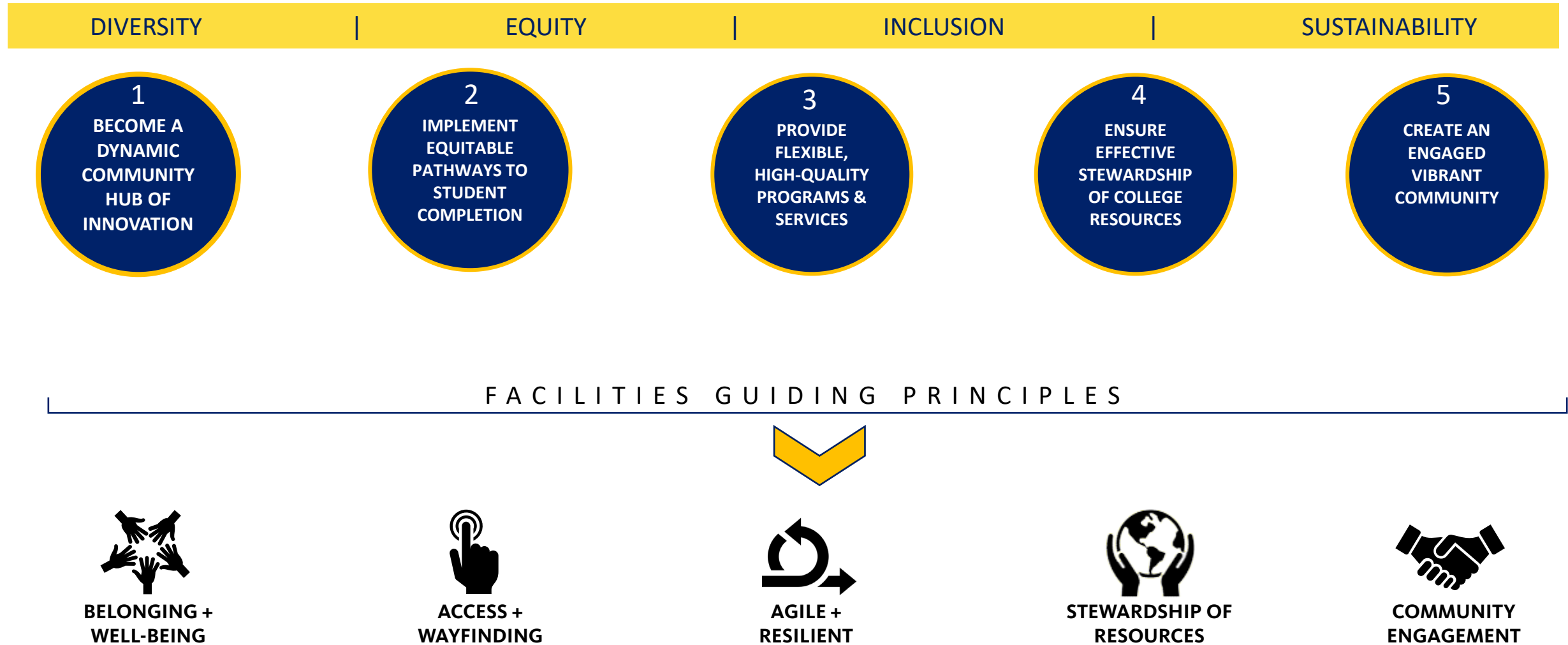
# Goals + Strategies

In September through November, the planning team presented this framework and provided opportunities to review and revise. Some minor grammatical changes were made along the way, and the final result can be found in the graphic below. In November the College Governance Council endorsed the goals and strategies and they will now go the Board of Trustees with anticipated review in January and February 2024.



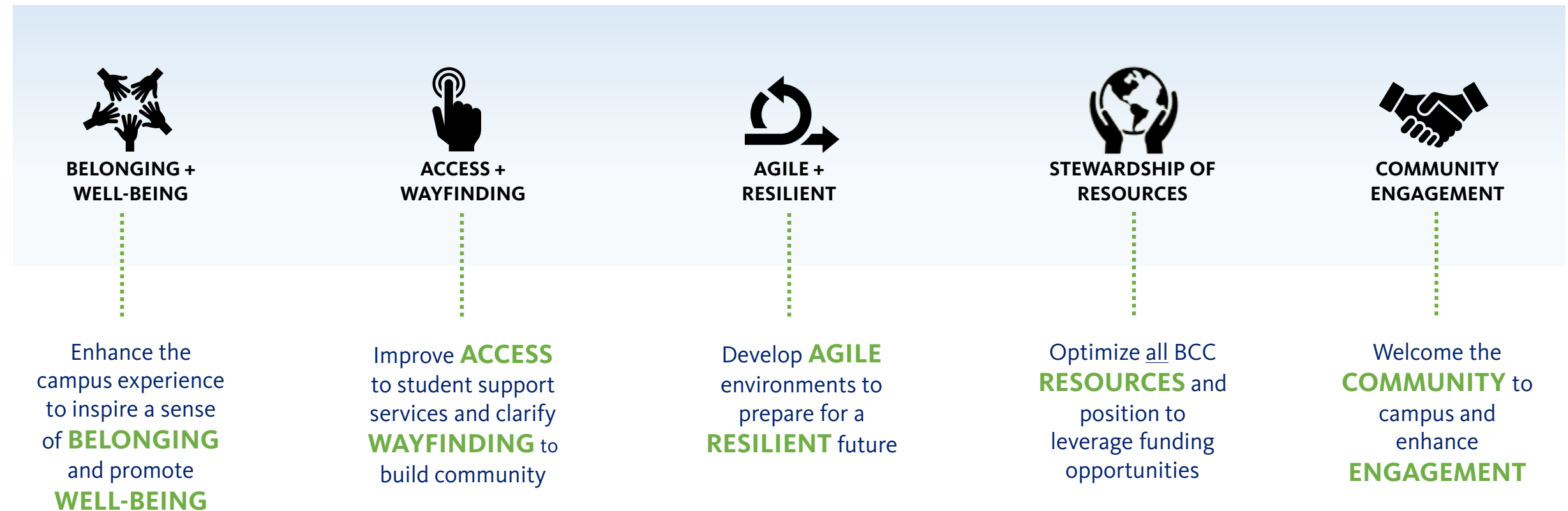
# BCC Framework

The goals and strategies informed the development of the five facilities guiding principles.



# Facilities Guiding Principles

Facilities Planning Principles are the key drivers that led to the development of the BCC Site and Facilities recommendations and serve as a guide for the future development of the campus. They provide a framework for identifying proposed improvements to the campus environment to support college goals.



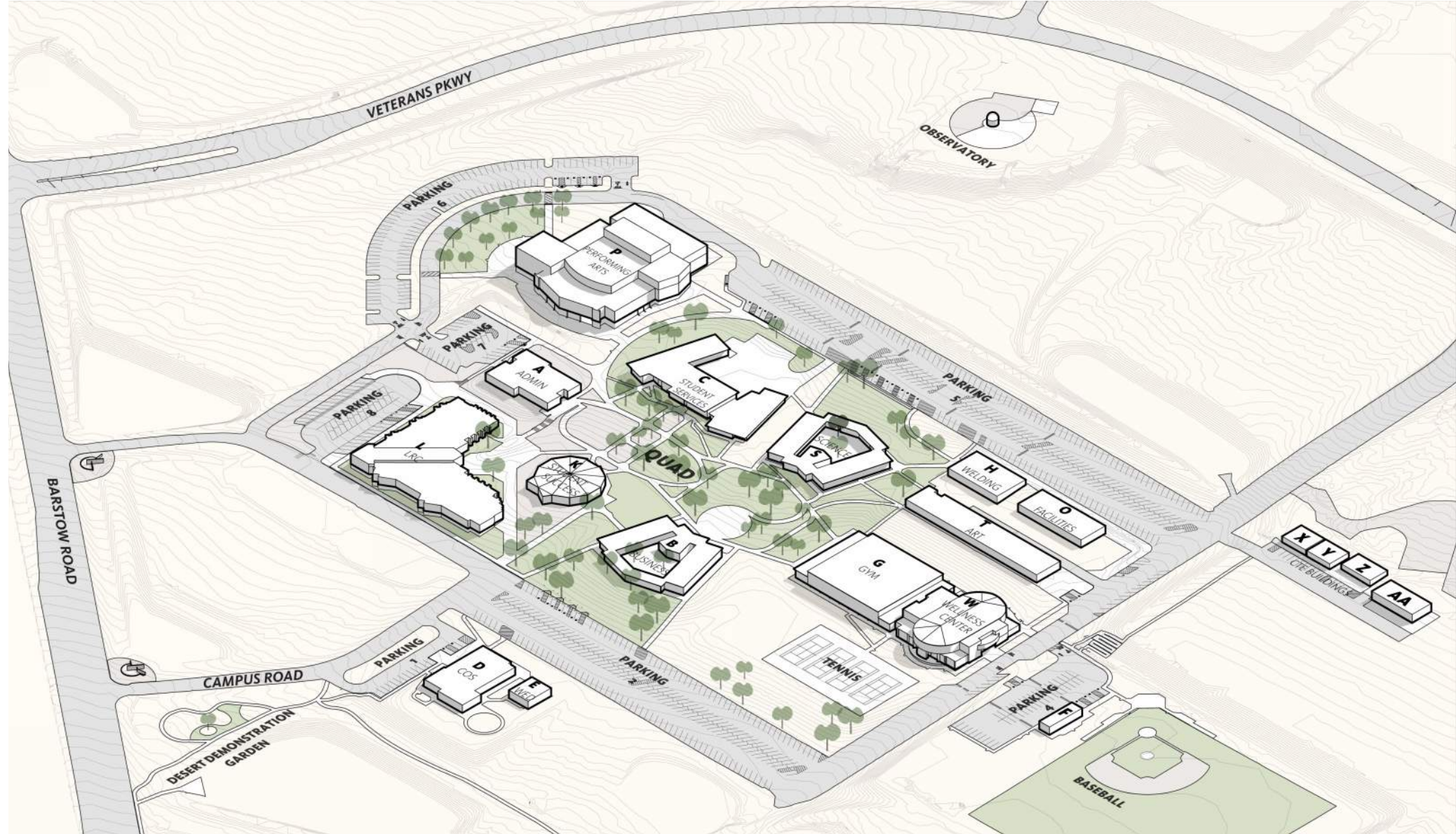
# 4

Campus Context  
Existing Campus  
Development History  
Facilities Condition Index  
Arrival Experience  
Pedestrian Experience

## CAMPUS TODAY



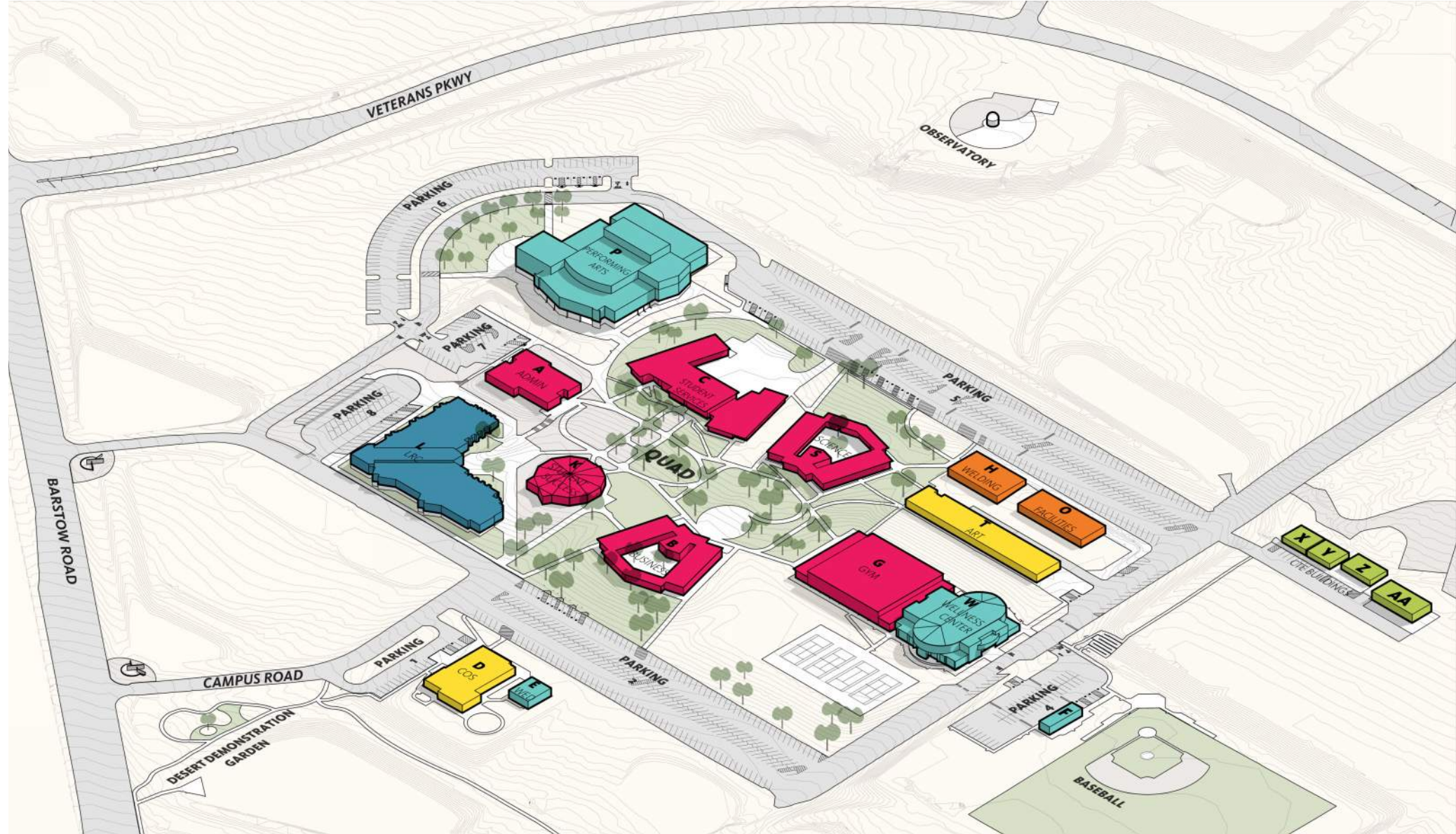
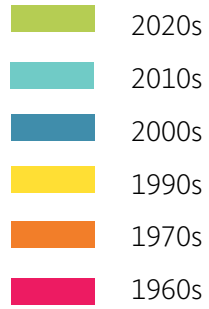
# Existing Campus



The planning process included the analysis of existing conditions in order to identify the key planning issues to address. The information was based on meetings with college staff, campus tours, forums, and discussions with the Planning Task Force. The findings are summarized in a series of graphics that illustrate patterns and characteristics to guide future development.

The existing campus plan shown in the graphic above illustrates the 2023 baseline conditions for planning.

# Development History

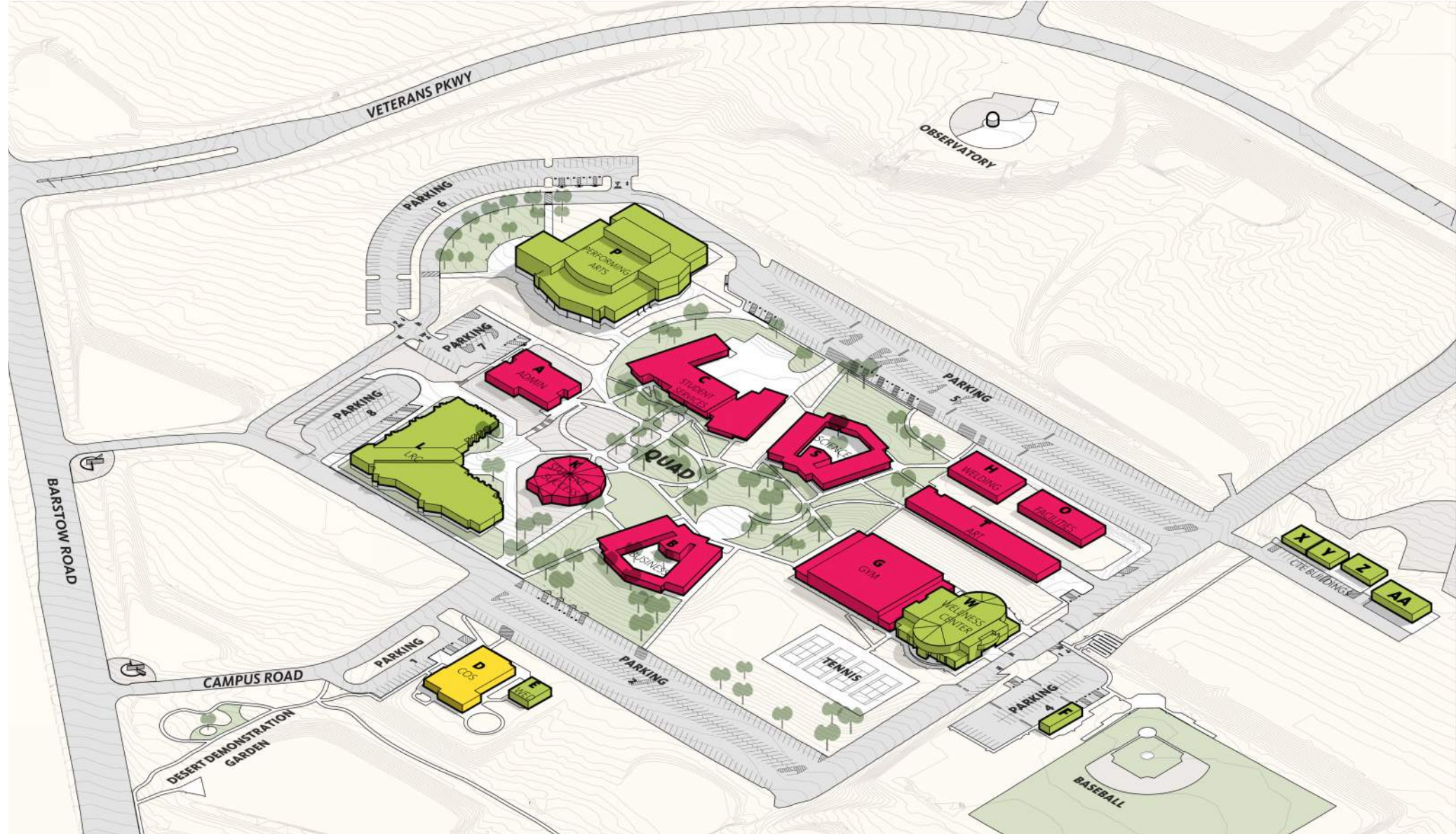


The Barstow Community College district was established in September 1959, and the original campus buildings were constructed in 1964 at its current location on Barstow Road. This graphic illustrates the development of the campus with buildings color-coded to indicate the decade of original construction.

- Many of the original campus buildings are over 60 years old and have had no significant renovations.
- Over the years, campus development has extended beyond the original campus core resulting in some isolated zones.

# Facilities Condition Index

- LOW (GOOD)
- MEDIUM (FAIR)
- HIGH (NEEDS ATTENTION)



The California Community College Chancellor’s Office (CCCCO) conducts surveys of college campuses at regular intervals and assigns Facilities Condition Index (FCI) scores to buildings. The FCI is a ratio of deferred maintenance dollars to replacement dollars and provides a straightforward comparison of the campus’ building assets. This diagram summarizes the scores reported on FUSION.

The majority of original buildings constructed in the 1960’s through 1980’s have high FCI numbers indicating that cost to renovate would be very high and replacement should be considered. This information was used to inform the planning discussions related to renovating versus replacing underperforming buildings to support program needs.

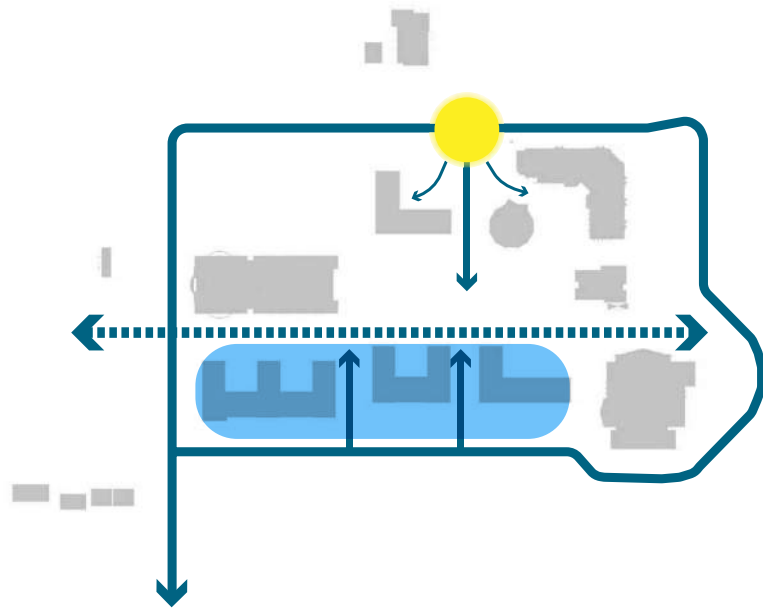
# 5

Development Concepts  
Long-Range Vision  
Project Descriptions  
Project Linkages

## LONG-RANGE VISION

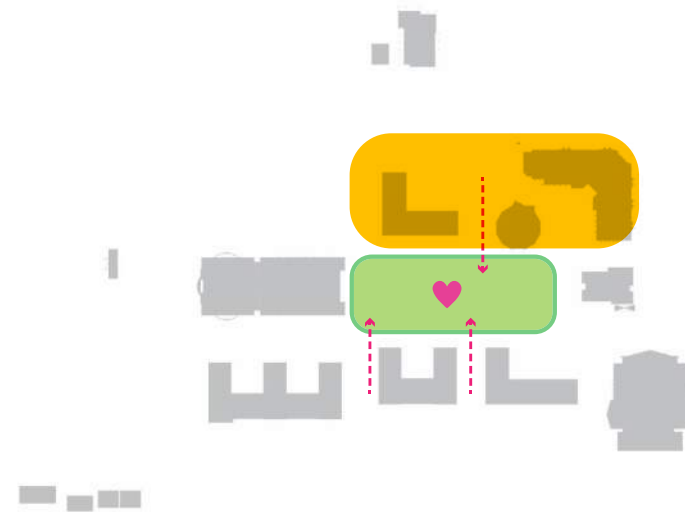


# Development Concepts



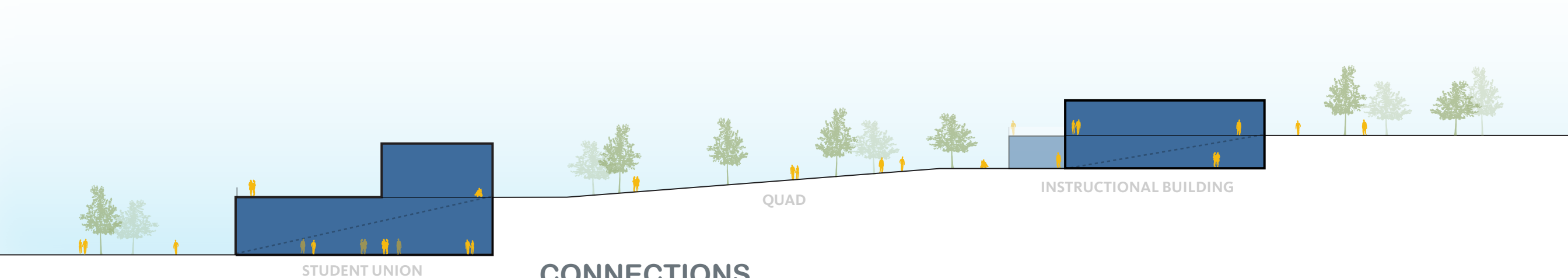
## CLARITY

A new “front door” creates a welcoming arrival experience, orients the visitor and leads to a “Welcome Plaza” that is connected to core support services.



## COMMUNITY

The campus quad is enhanced to promote collaboration, provide spaces for gatherings and build a sense of community.



## CONNECTIONS

Welcoming and accessible pedestrian pathways are developed through new multi-story facilities to connect the campus levels.

# Long-Range Vision

The BCC Long-Range Vision presents a framework to guide campus development. It includes recommendations for a series of site and facilities projects that are described on the pages that follow.

While drawings in the plan appear specific, the forms are conceptual sketches intended to highlight the location and purpose of proposed improvements. The design for each project will take place as projects are funded and detailed programming and design take place with a designated user group.



## LEGEND

- NEW CONSTRUCTION
- RECONSTRUCTION

# Project Descriptions



## WELCOME CENTER

A reconstruction of the existing Learning Resource Center is proposed to shift student services to a front door location. The integration of student and academic support services, including the Library, and the Teaching and Learning Support Center, will create a seamless experience for students, increase access and enhance student success.

## STUDENT RESOURCE CENTER

The existing Student Success Center will be renovated and serve as an extension to the Welcome Center, providing essential resources to students in a central location. The renovation will preserve the original architectural character and enhance the quad experience.

## STUDENT UNION

A new Student Union is proposed to complete the trio of buildings at the campus entry, surrounding the Welcome Plaza. Core functions planned for the new facility include food services, student activities, collaboration areas, the bookstore and Maker Space (relocated from Building D).

## CHILD DEVELOPMENT CENTER

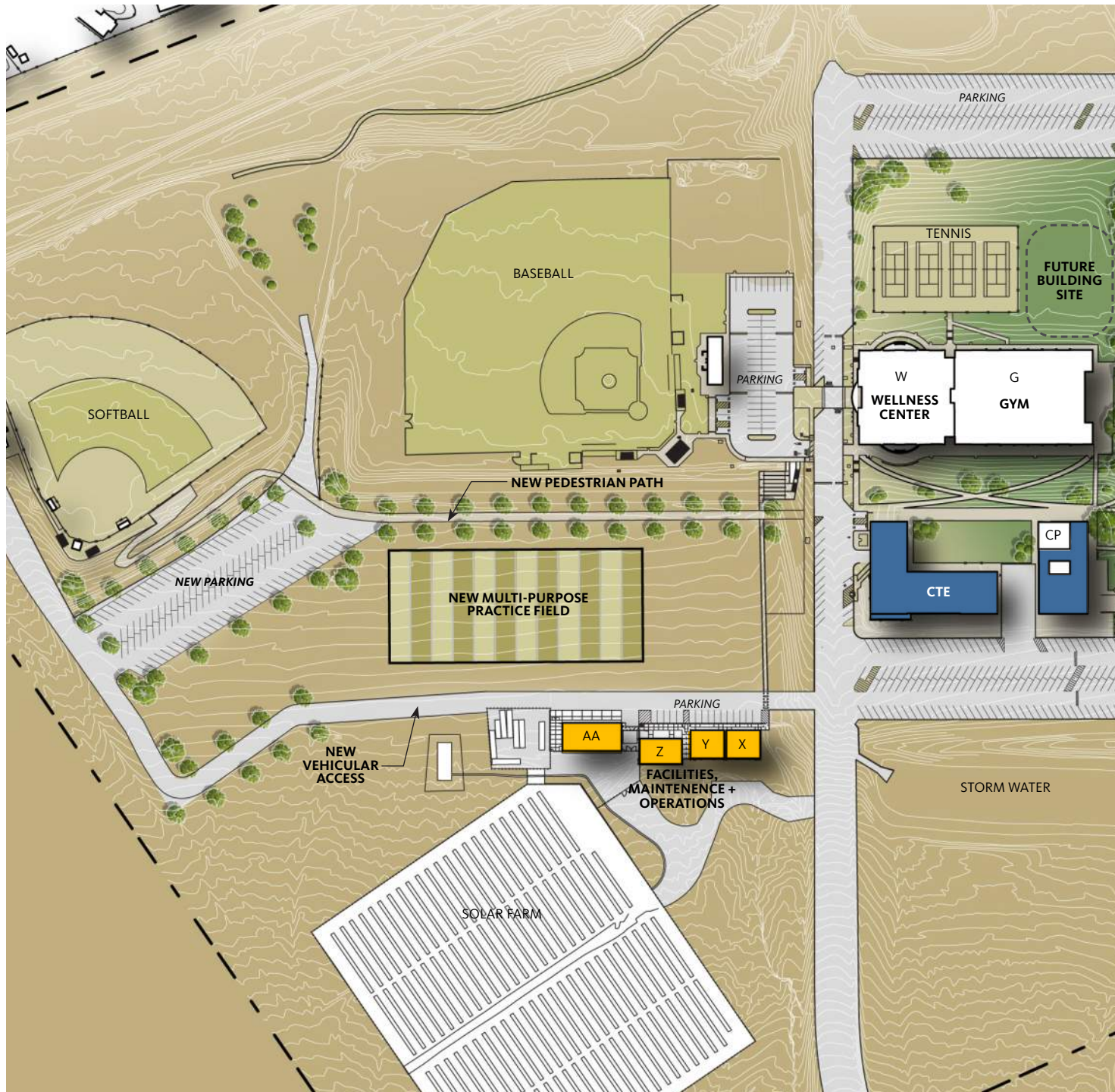
The existing Building D is proposed to be renovated and repurposed to become a new Child Development Center. This important service will address a growing need within the BCC community.

## INSTRUCTIONAL BUILDING 1

Following the shift of student services functions to Building L, the existing Student Services Building will be removed and a new multi-story instructional building will be constructed. The building will be designed to support the instructional programs located in the existing Science Building including academic support. The new facility will provide enhanced learning environments designed for flexibility and adaptability.

## INSTRUCTIONAL BUILDING 2

Following the construction of Instructional Building 1, a second multi-story Instructional Building will be constructed to replace programs currently housed in aging facilities and will create new learning environments designed for flexibility and adaptability.



# Project Descriptions

## CTE COMPLEX

A new CTE Complex is proposed to replace aging facilities, bring core academic programs to the campus core and create improved learning environments to support programmatic needs. Functions currently located in Buildings X, Y, Z and AA will shift to the campus core to enhance collaboration and build community.

## FACILITIES, MAINTENANCE + OPERATIONS

Following the shift of CTE programs to the campus core, Buildings X, Y, Z and AA will be repurposed to house Facilities, Maintenance and Operations. This location includes the infrastructure needed to support this new use, provides the needed access and leverages existing resources.

## NEW PEDESTRIAN PATH

A proposed pedestrian path that connects the new CTE complex and Instructional Buildings will be extended across the road towards the fields, establishing a clear connection for students between the academic and athletics zones of campus.

## NEW MULTI-PURPOSE PRACTICE FIELD

A new multi-purpose practice field will be located near the softball and baseball fields to allow for future flexibility and athletic programs.

## NEW VEHICULAR ACCESS + PARKING

A new road and parking area is proposed to improve access to the athletic fields for campus and community members.

# Project Linkages

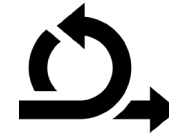
Proposed projects identified in the Long-Range Vision is linked to multiple facilities planning principles as highlighted in this chart.



**BELONGING + WELL-BEING**



**ACCESS + WAYFINDING**



**AGILE + RESILIENT**



**STEWARDSHIP OF RESOURCES**



**COMMUNITY ENGAGEMENT**

<b>LONG-RANGE VISION PROJECTS</b>					
Student Union	●	●	●	●	●
Child Development Center (CDC)	●			●	●
Student Resource Center	●	●		●	●
Welcome Center	●	●	●	●	●
Instructional Building 1	●	●	●	●	
Instructional Building 2	●	●	●	●	
CTE Complex	●	●	●		
Facilities, Maintenance + Operations		●		●	
Future Building Site			●		
Pedestrian Path Development	●	●			●
Multi-purpose Practice Field	●		●		●
Vehicular Access and Parking		●		●	●