

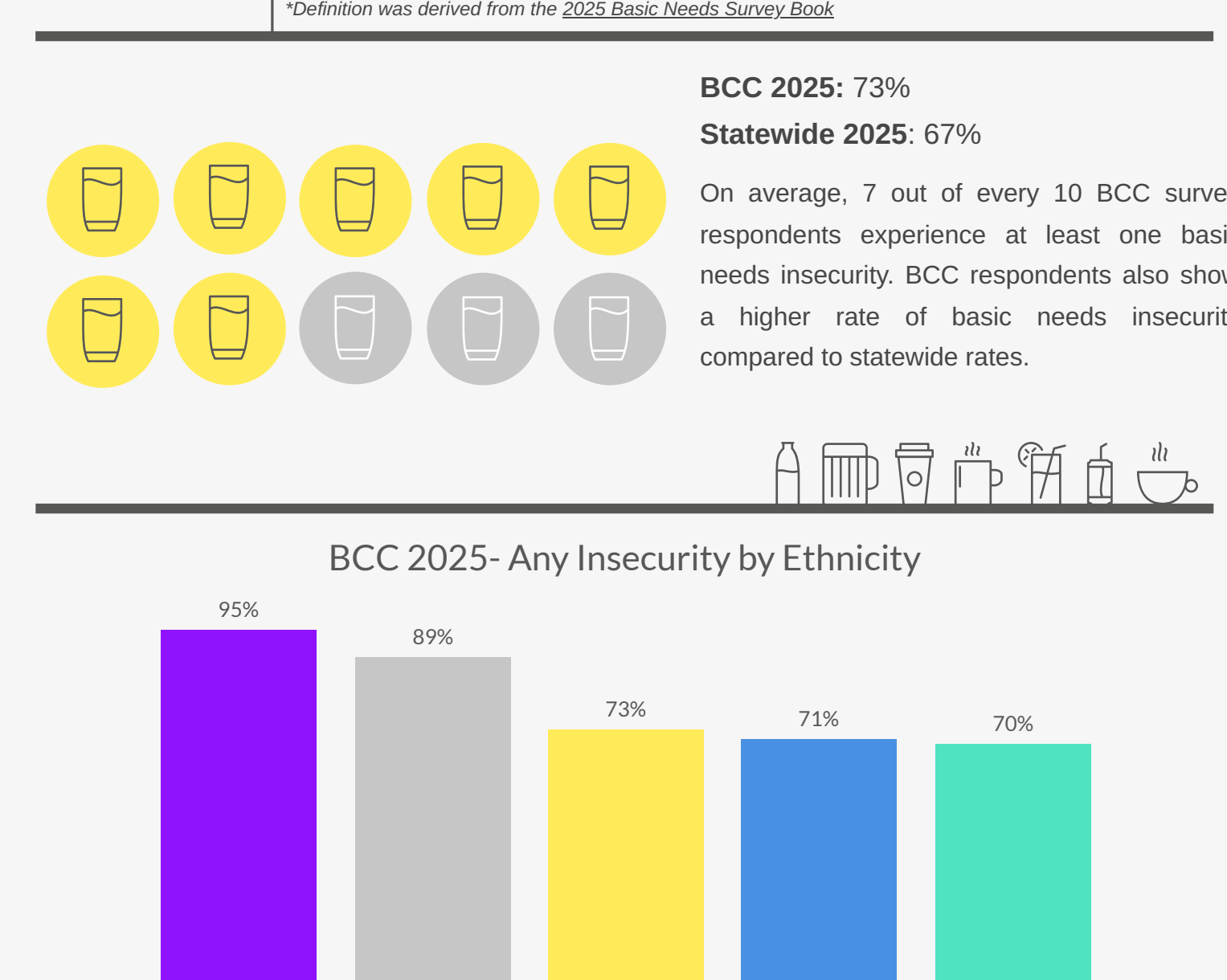
ns may have a
educational
enges, and this
s that still exist.

Statewide 2025

76,978 Responses
102 California Community Colleges Participated

Male 29%
Non-Binary 3%
Female 66%

01



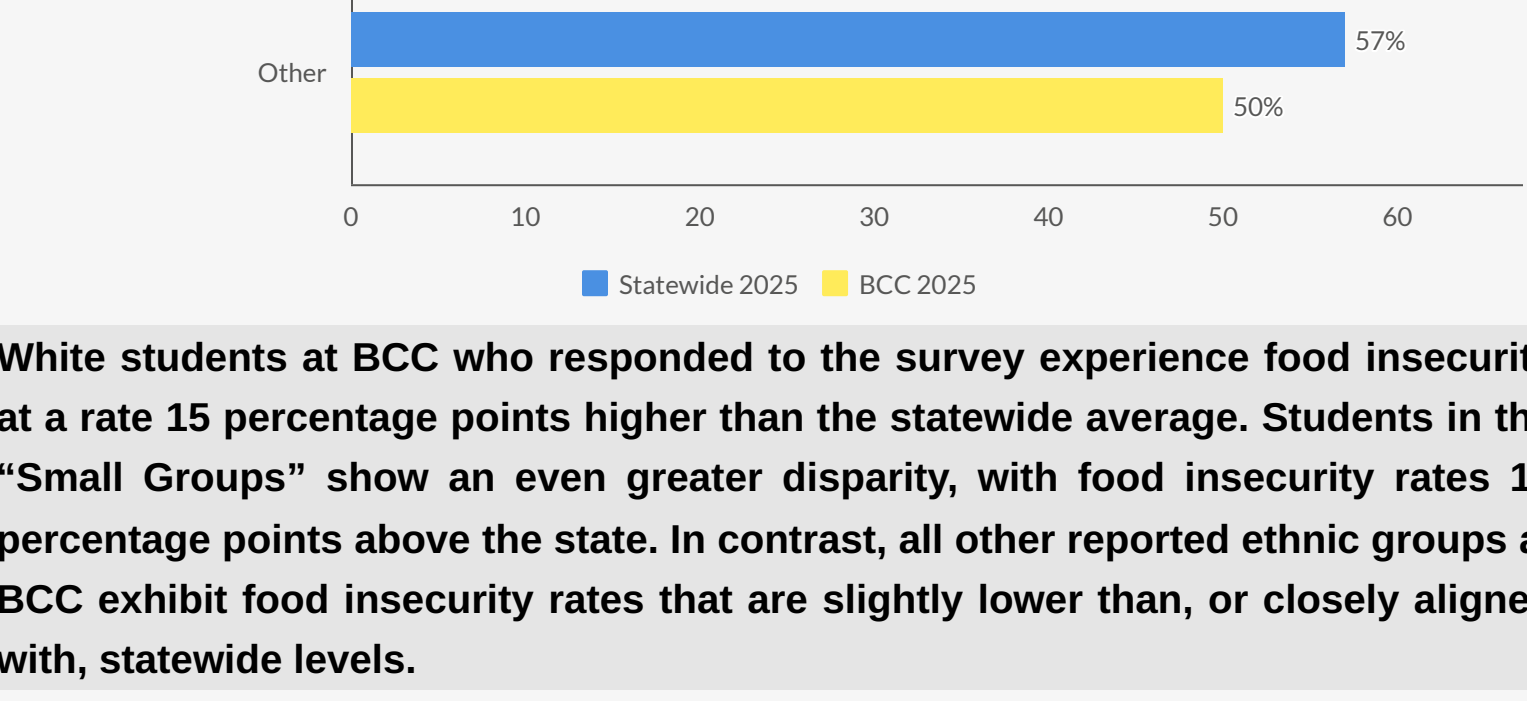
combined into the "Small Group" category. American Indian, Alaska Native, and Pacific Islander/Native Hawaiian were combined into the "Small Group" category.

--	--



the limited or
of nutritionally
d, or the ability

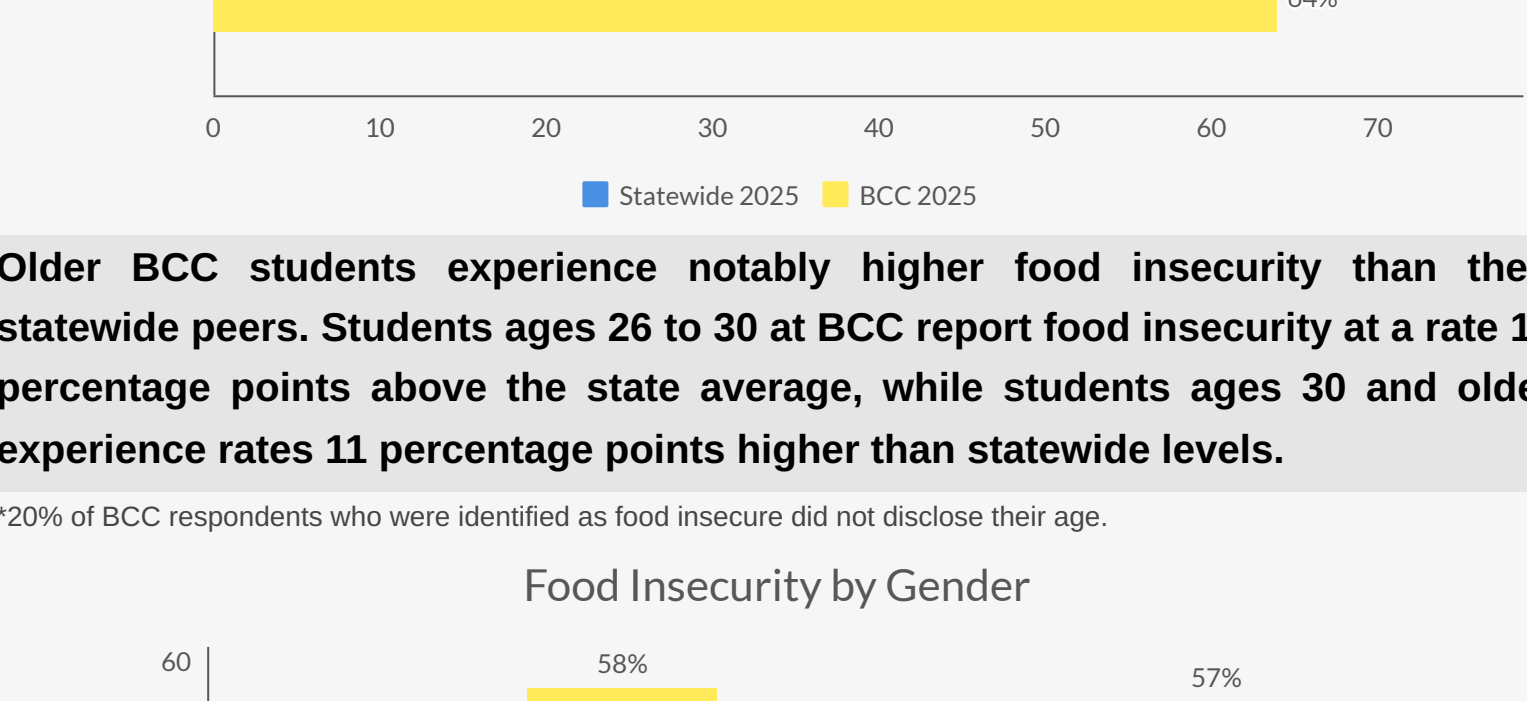
Very Low Security



Food Insecurity by Age

Age Group	Food Insecurity Rate
18 to 20	33%
21 to 30	25%

Page 10 of 10

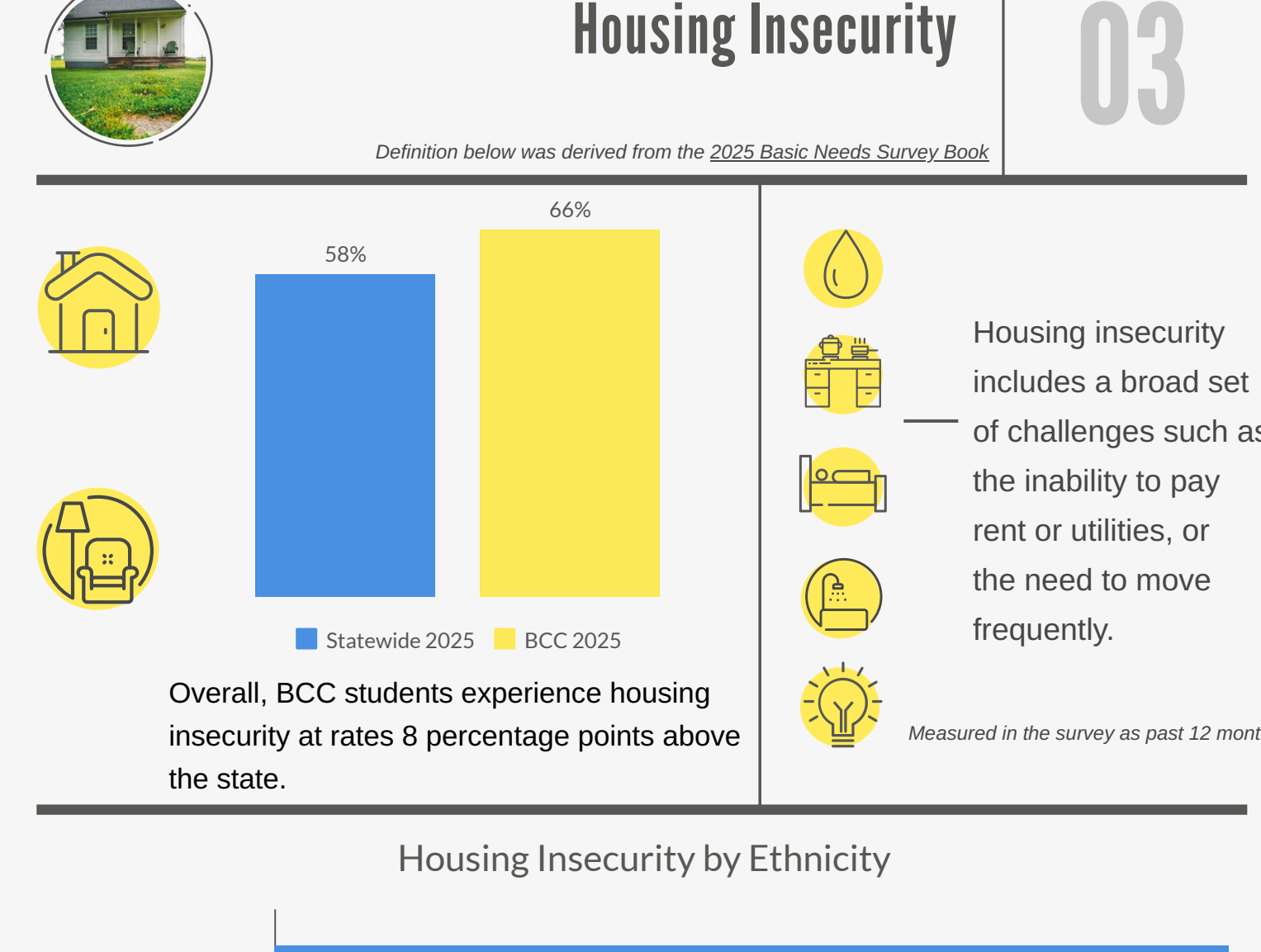


Response	Percentage
Doing a good job	33%
Not doing a good job	67%

Gender	Very satisfied (%)
Women	15
Men	15

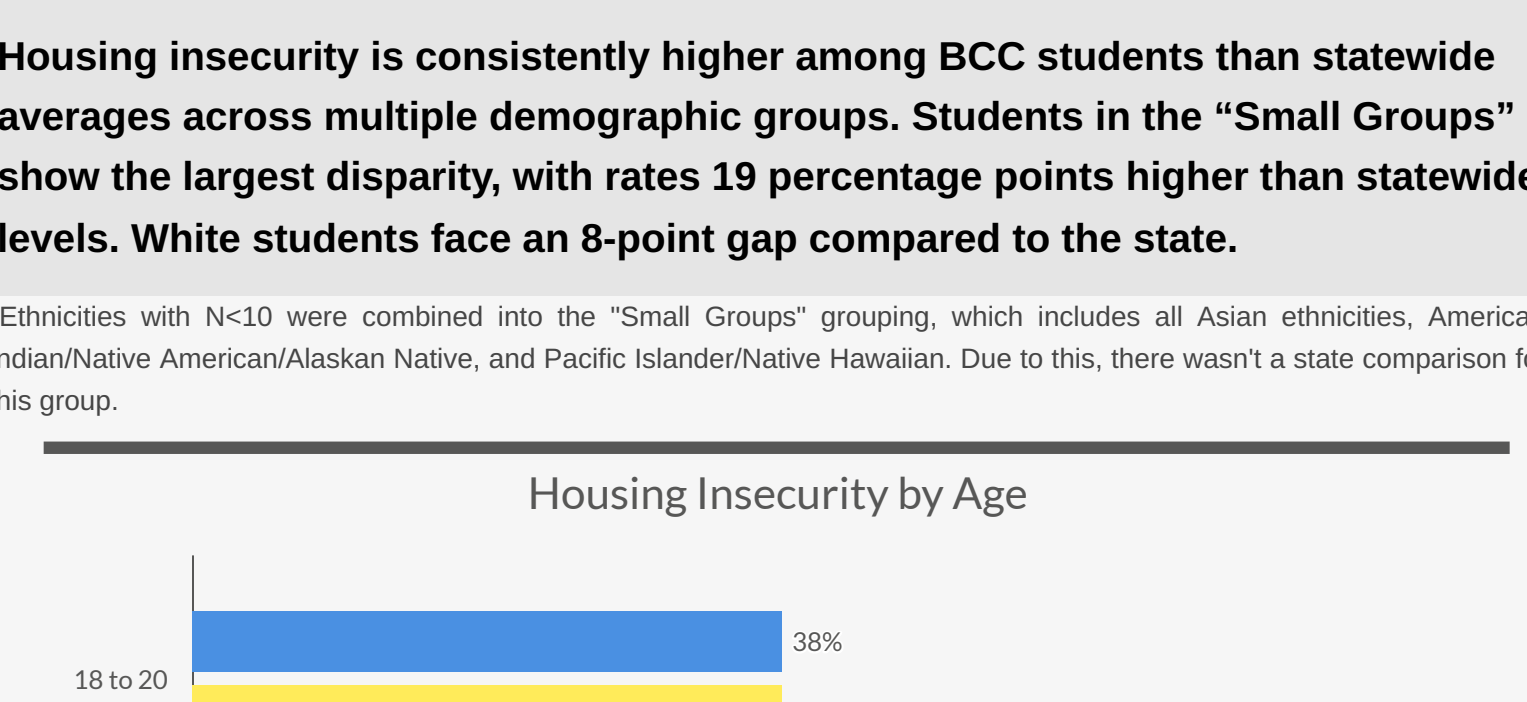
men at BCC experience
than the statewide average
above statewide levels.

patterns. Women at BCC experience rates higher than the statewide average, 10 percentage points above statewide levels.



Group	Members (%)	Not Members (%)
*Small Groups	53%	72%
Hispanic or Latina/o/x	62%	65%
White or Caucasian	52%	60%

A horizontal number line with tick marks at 10, 20, 30, and 40. A yellow rectangular bar is positioned above the line, starting at 10 and extending to 40.

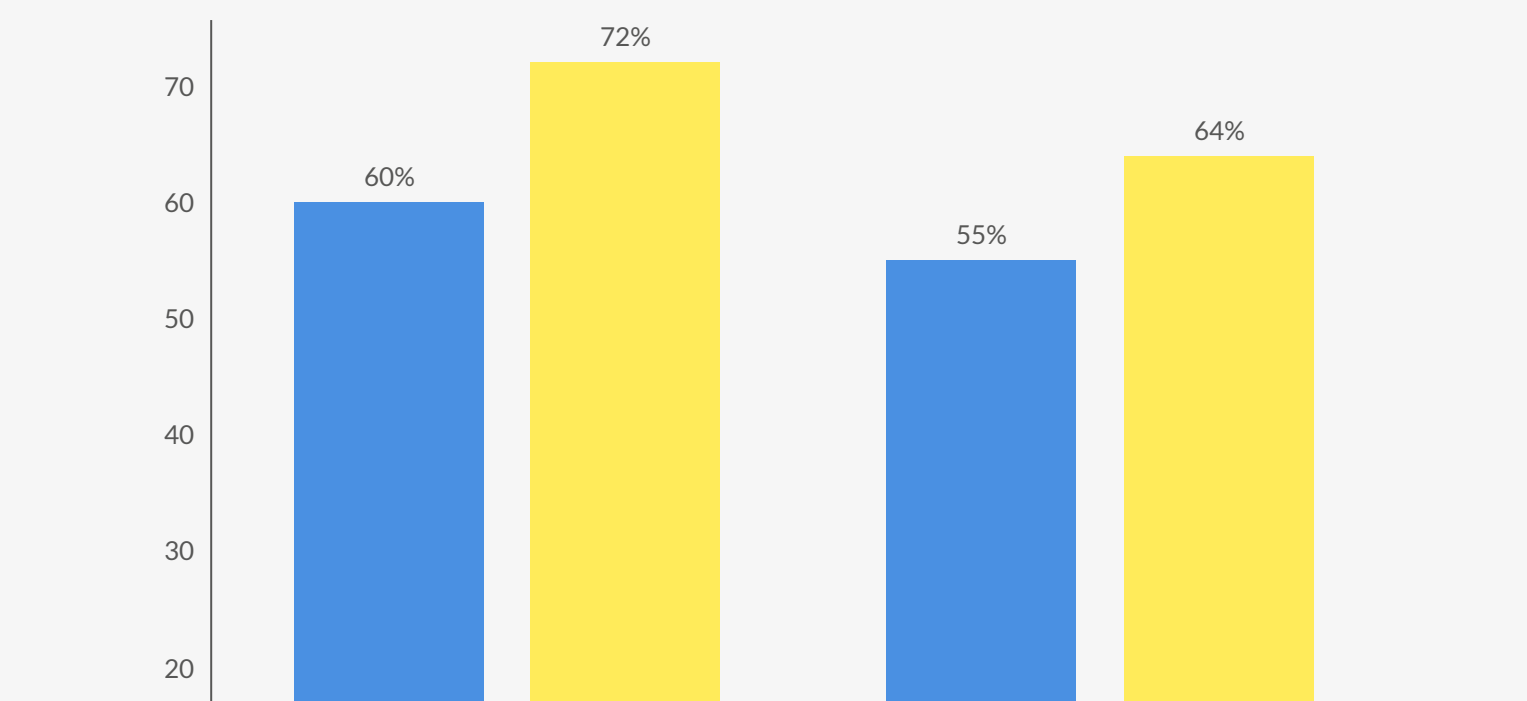


Age Group	Believe U.S. is a Democracy (%)
21 to 25	60%
26 to 30	61%
31 to 40	73%
41 to 50	75%

App Type	Percentage
Financial management app	83%
Other app	0%

percentage points higher than the

identified as housing insecure did not disclose the



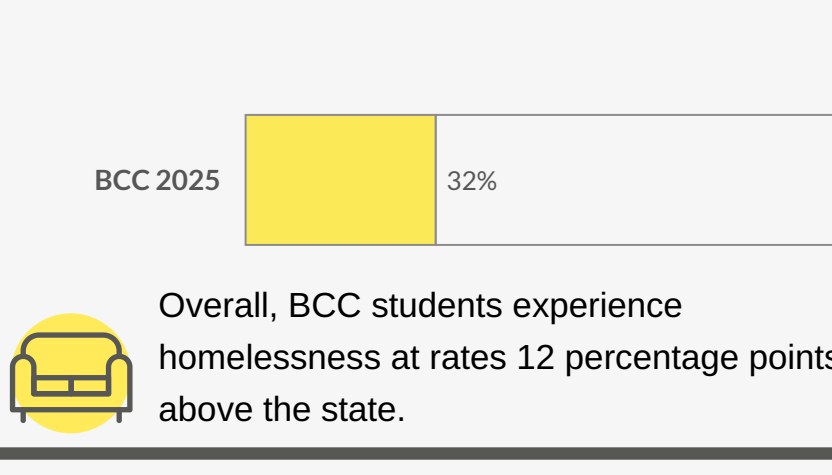
Gender	Statewide 2025	BCC 2025
Women	12%	10%
Men	12%	10%

Gender disparities follow a similar pattern, with women experiencing a 12-point

Homelessness

Definition below was derived from the 2025 Basic Needs Survey

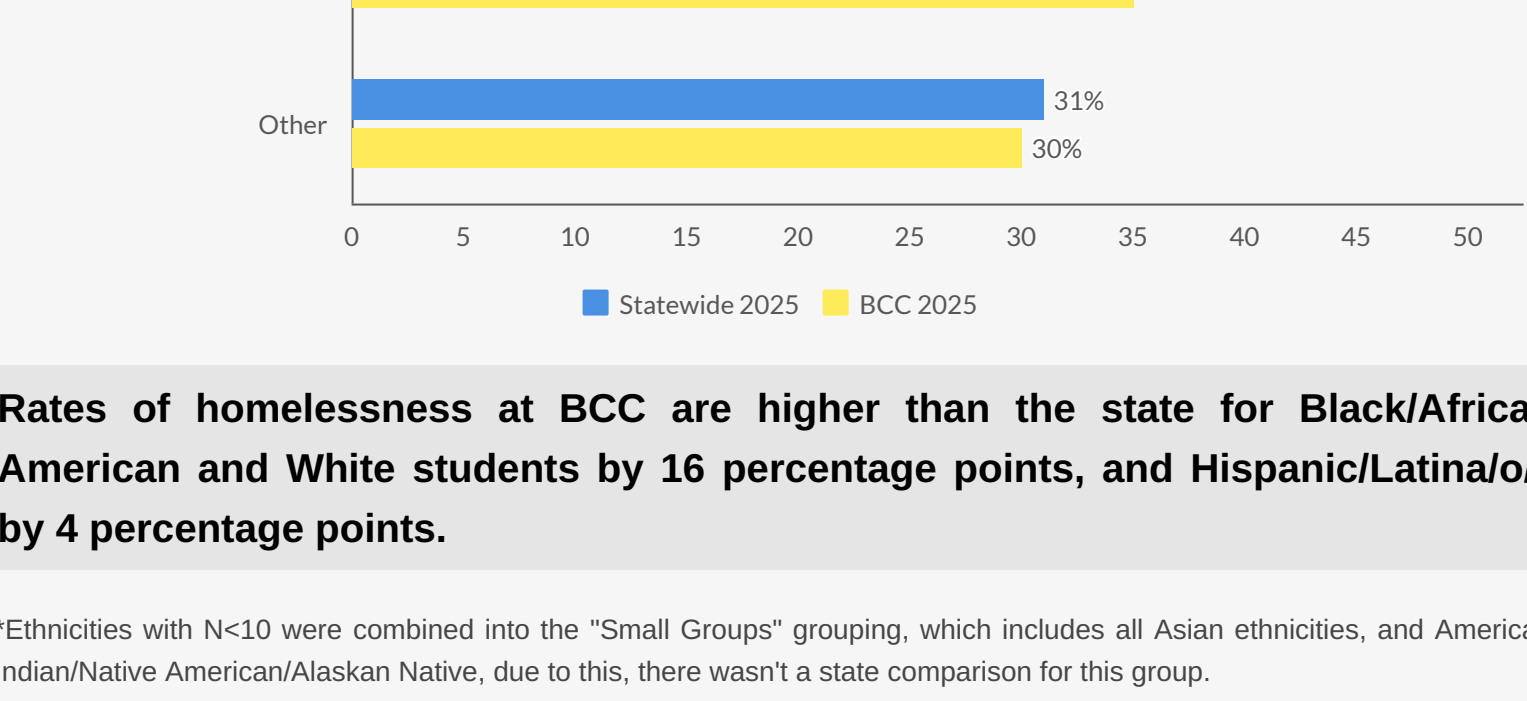
place to live. Students were identified as homeless if they responded affirmatively to a questions asking if they had been homeless or if they identified living conditions that are considered signs of homelessness (e.g. couch surfing, living somewhere not meant for habitation).



African American or Black

Response	Percentage
Doing a good job	34%
Not doing a good job	66%

Category	Percentage
Blue Bar	18%
Yellow Bar	22%

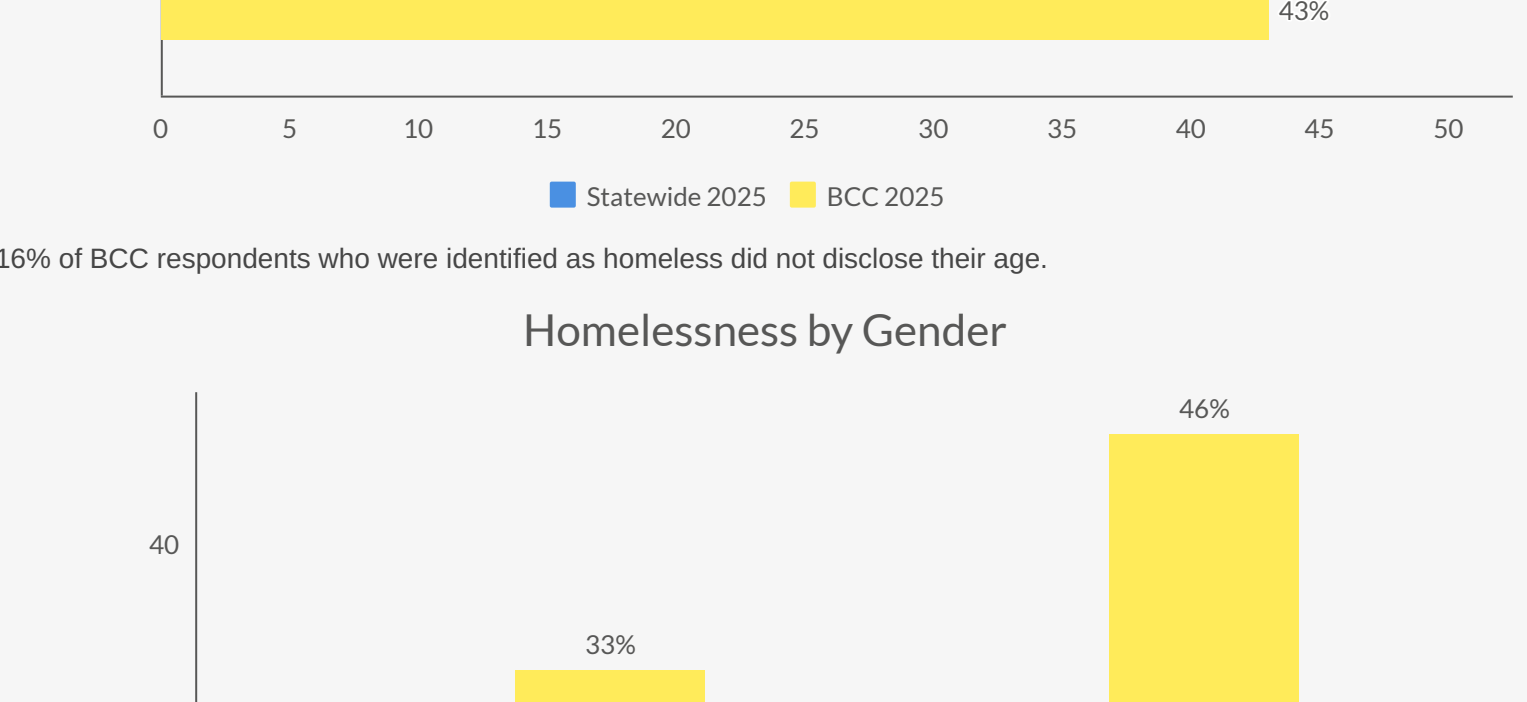


Homelessness by Age

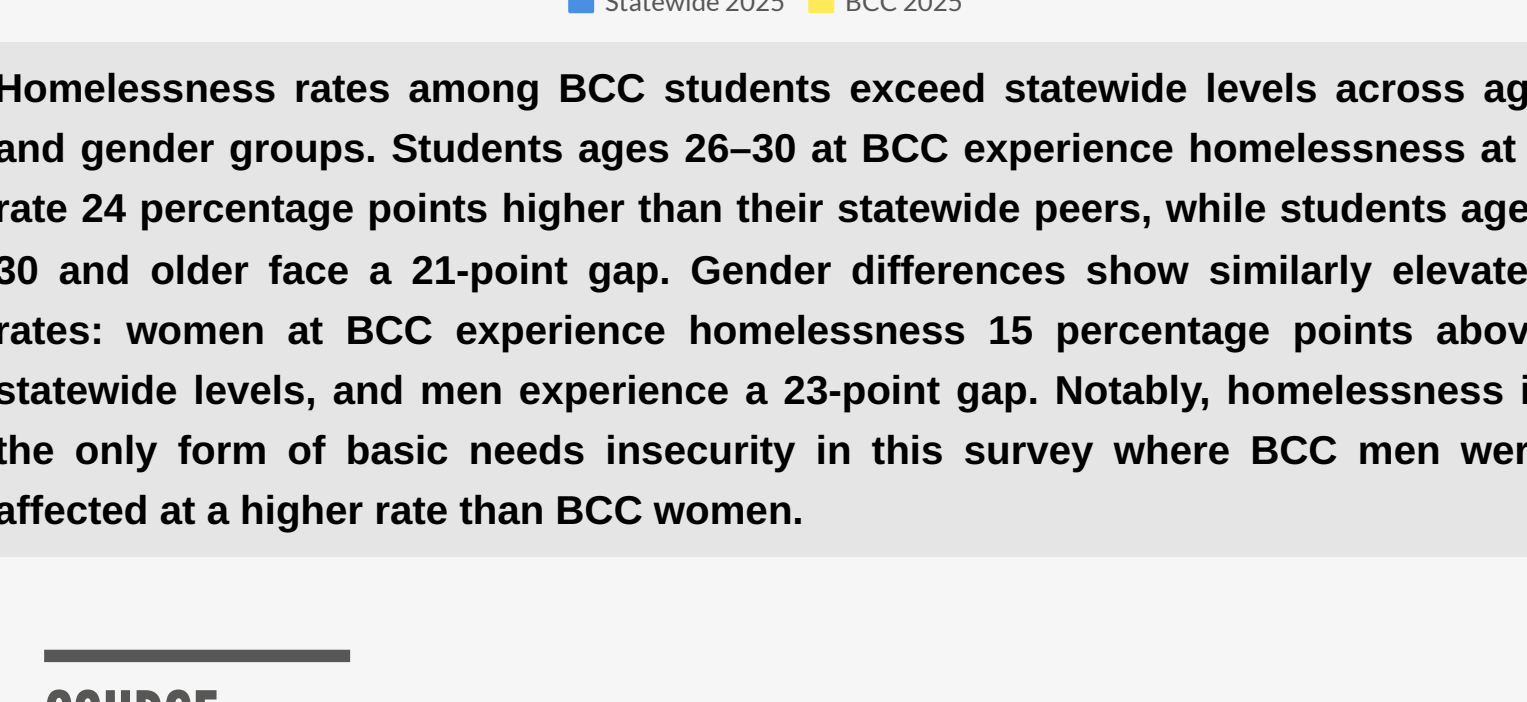
Age Group	Percentage
18 to 20	13%

Age Group	Percentage
21 to 25	21%
26 to 35	25%

100



Response	Percentage
Current government	18%
Opposition	23%
Don't know	20%



Barstow Community College' Real College California – 2025 Basic Needs Survey Results
Real College California – 2025 Basic Needs Survey Report

11

