

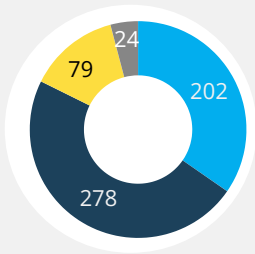


Barstow Community College Fact Sheet

Created: May 2023



2021-22 Awards

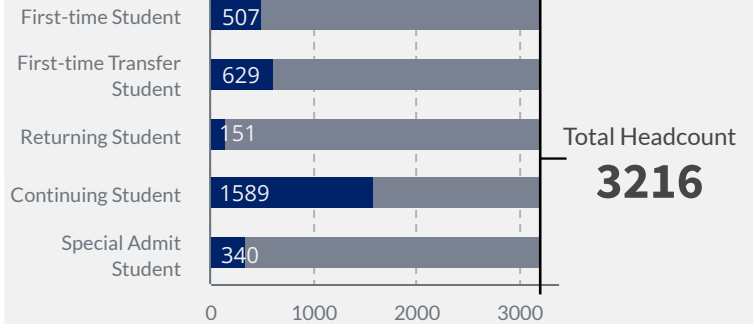


- ADTs (34.65%)
- AA/AS (47.68%)
- Certificates (13.55%)
- Non-Credit Awards (4.12%)

Total number of awards
583

*Data Source: Data Mart

Fall 2022 Student Headcount and Students Type Count



*Data Source: Data Mart

What are our students studying? Why?



Top 3 Declared Majors by Cluster (Fall 2022)



549

Business and
Entrepreneurship



492

Social and
Behavioral Sciences



391

Life Sciences

39%
of students want to
obtain their
associate's and
transfer

16%
of students are
undecided about
their educational
goal

10%
of students want to
obtain an associate
without transferring

Top 3 Declared Majors by Program (Fall 2022)



257

Biology AST



242

Pre-Allied Health
AS



216

Psychology AAT

*Data Source: Banner Report

Enrollment, FTES, and Offerings (Fall 2022)

Credit Enrollment Count	7993
Credit Section Count	388
FTES for Credit Sections	1127

Non-Credit Enrollment Count	617
Non-Credit Section Count	41
FTES for Non-Credit Sections	31

*Data Source: Data Mart

How many units were students taking (Fall 2022)?

52%

of students took
0-5.9 units

26%

of students took
6-11.9 units

15%

of students took
12-14.9 units

7%

of students took
15+ units

*Data Source: MIS Files

Average Cumulative GPA- All Students (Fall 2022)

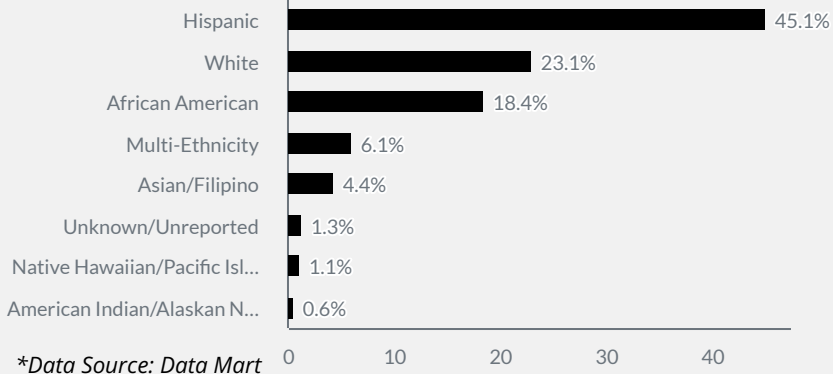
2.23

*Data Source: MIS Files

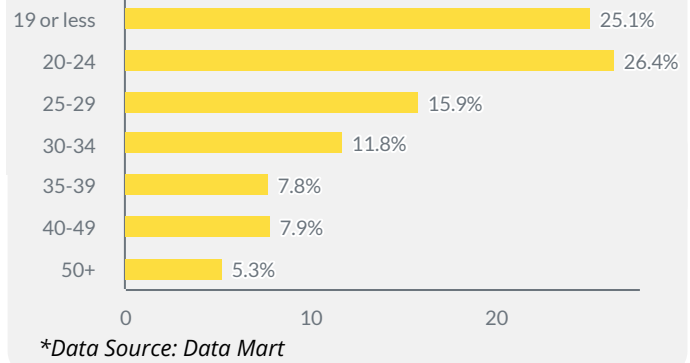




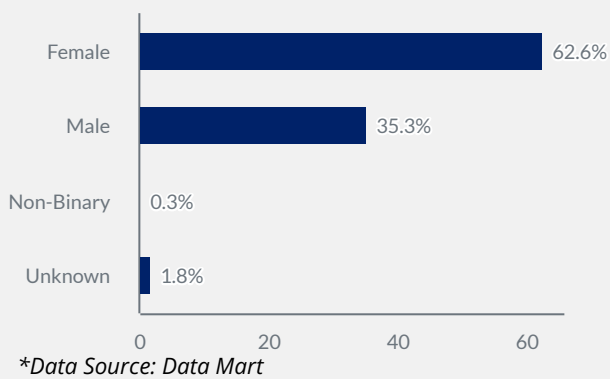
Student Distribution by Ethnicity



Student Distribution by Age Group



Student Distribution by Gender



Fall 2022 Retention and Success

Overall Success
68.5%

Online Instruction
Success

66.6%
↓ 1.9%

Traditional
Instruction Success

79.8%
↑ 11.3%

Overall Retention
86.5%

Online Instruction
Retention

86.2%
↓ 0.3%

Traditional
Instruction Retention

86.4%
↓ 0.1%

Online success was lower than the overall average while traditional success was over 10% higher than the overall average (see arrow with percentages in the bottom of each square). Online retention and traditional retention did not have a significant difference from the overall average. Instructional methods included in the overall average but not shown here are hybrid, traditional with Hyflex, web conferencing, and all other.

*Data Source: Banner Report

In Fall 2022 we served...



330
Military Students



1263
First Generation Students



140
Students who
have ever been
in Foster Care



75
Veteran
Students



337
Dual enrollment/
special admit



94
Homeless or
Housing Insecure
Students

*Data Source: Data Mart

CSU Transfer Statistics (Fall 2022)

132

CSU
Applications

108

Admitted to
CSU

81%

Percent
Admitted to
CSU

48

Total Who
Enrolled in CSU

UC Transfer Statistics (2022-23)

20

UC Applications

14

70%

% Admitted to
UC

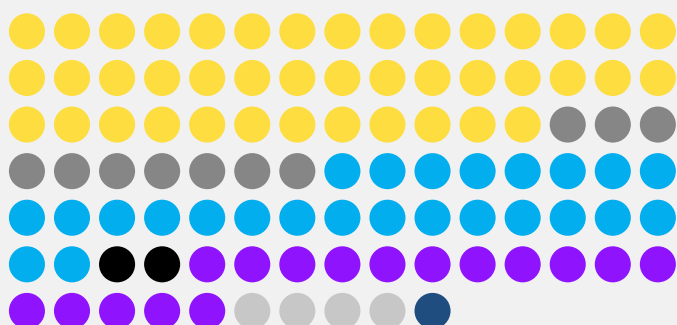
11

Enrolled in UC

*Data Source: BCC Transfer Statistics Page



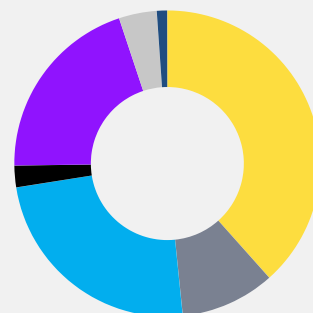
In Fall 2022 Students Came From...



■ Barstow Area (41.87%)
 ■ Ft. Irwin (10.37%)
■ Victorville Area (24.72%)
 ■ SB County- Other (2%)
■ In CA- Out of SB County (16.32%)
■ Out-of-State (3.71%)
 ■ Unknown (1.02%)

*Data Source: Banner Report

Percent FTES by Residence



■ Barstow Area (38.4%)
 ■ Ft. Irwin (10%)
■ Victorville Area (24.1%)
 ■ SB County- Other (2.3%)
■ In CA- Out of SB County (20.1%)
■ Out-of-State (4%)
 ■ Unknown (1.1%)

*Data Source: Banner Report

Financial Aid Facts (2021-22):

\$58,559

paid to 17 students for
work study

\$11,831,544

paid to 2144 students
for **grants**

\$1,833,215

paid to 2513 students
for **Promise Grant**

\$1,040,843

paid to 335 students
in **loans**

\$262,030

paid to 128 students in
scholarships

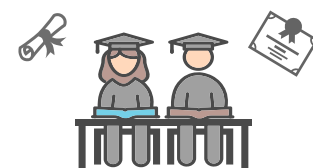
2021-22 Total Aid
for 2932 students

\$15,026,191

*Data Source: Data Mart

Associate Degree for Transfer Programs

Administration of Justice, AST	Art History, AAT	Biology, AST	Business Administration, AST
Business Administration 2.0, AST	Chemistry, AST	Communication Studies, AAT	Computer Science, AST
Early Childhood Education, AST	Elementary Teacher Education, AAT	English, AAT	Environmental Science, AST
History, AAT	Kinesiology, AAT	Mathematics, AST	
Philosophy, AAT	Political Science, AST	Psychology, AST	
Social Justice, AST	Sociology, AST	Studio Arts, AST	



**Data Researched, Collected, and Compiled by:
the Office of Institutional Research**