



Barstow Community College Fall 2021 Reopening



At BCC, your health and safety are our top priority, therefore many safety measures for on-campus classes have been put in place for the fall 2021 semester. Some of these precautions include holding classes in buildings across campus to minimize the chance of students crossing paths and providing enough time between classes to give ample time to disinfect. Additionally, the maximum capacity for face-to-face sections have been set to low numbers so that social distancing within each classroom can be achieved.



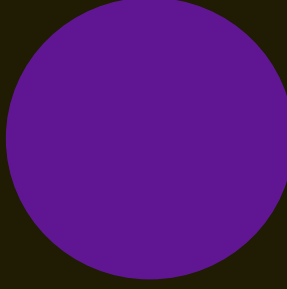
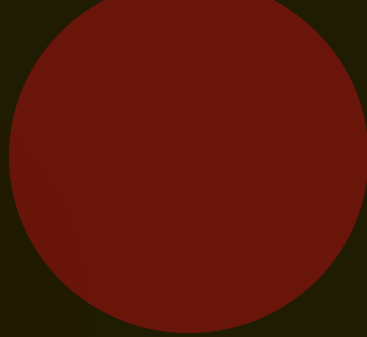
Here is a visualization of the maximum number of students that will be on campus at any given time if face-to-face classes were to reach full enrollment capacities.

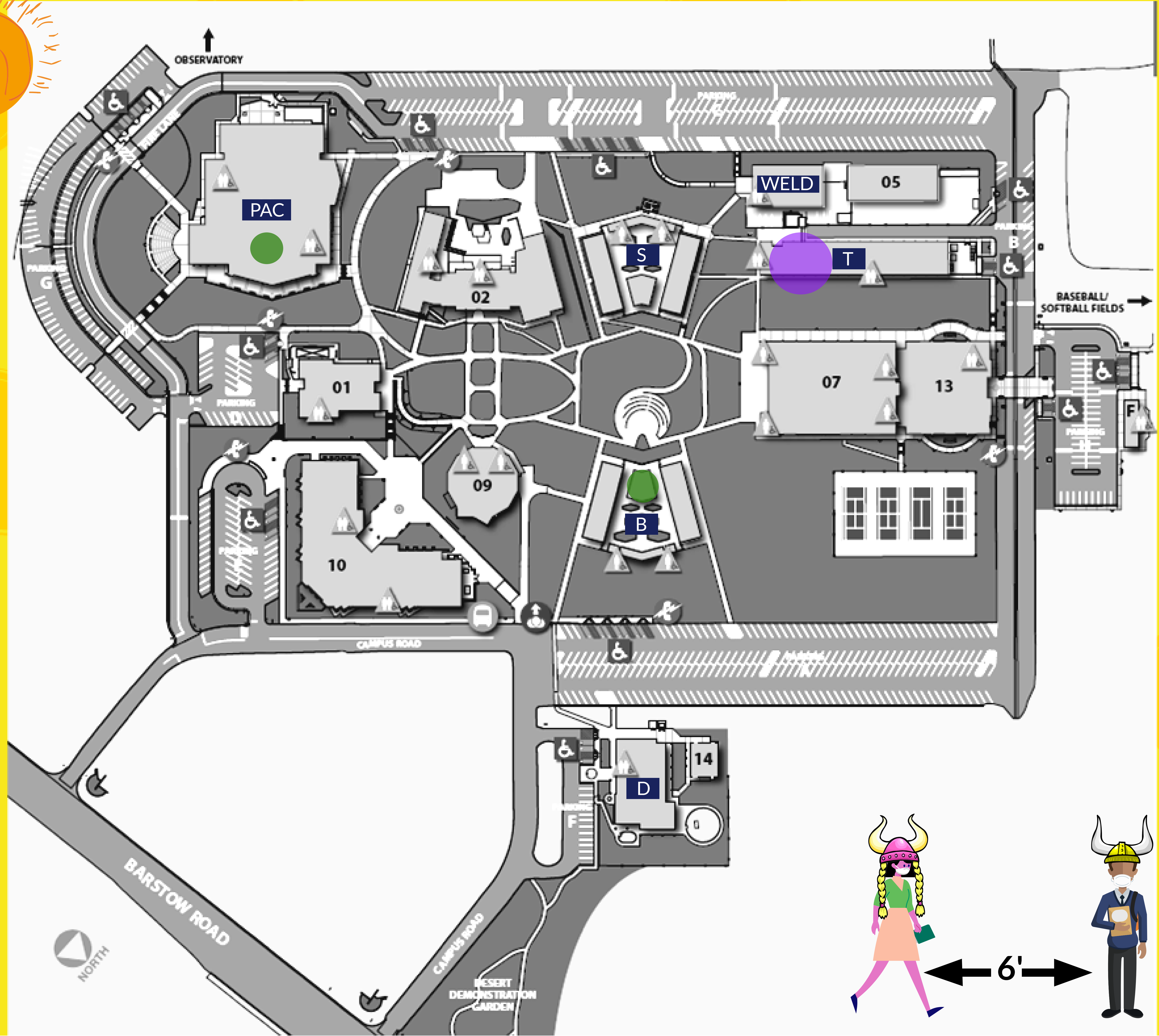
Mon & Wed Max Student Count at any time from 8:00 am- 4:30pm

Building B (08):
15 students from 9:30 - 12:20 pm
15 students from 1:30pm -3:20 pm

Building PAC (12):
15 students from 3:00 - 4:30 pm

Building T (06):
13 student from 9:30 - 10 am
26 students from 10 - 10:45 am
13 students from 10:45 - 11:15 am
13 students from 1:30 - 2:45 pm

Key	
	10 students max
	14-16 students max
	26-30 students max
	31-36 students max





Mon & Wed Max Student Count at any time from 4:30 - 8:50 pm

Building PAC (12):
35 students from 4:30 - 7:30 pm
15 students from 7:30 - 8:50 pm

Building S (03):
16 students from 4:30 - 5:00 pm
36 students from 5:00 - 7:15 pm
20 students from 7:15 - 8:50 pm

Building WELD (04):
14 students from 6 - 8:50 pm

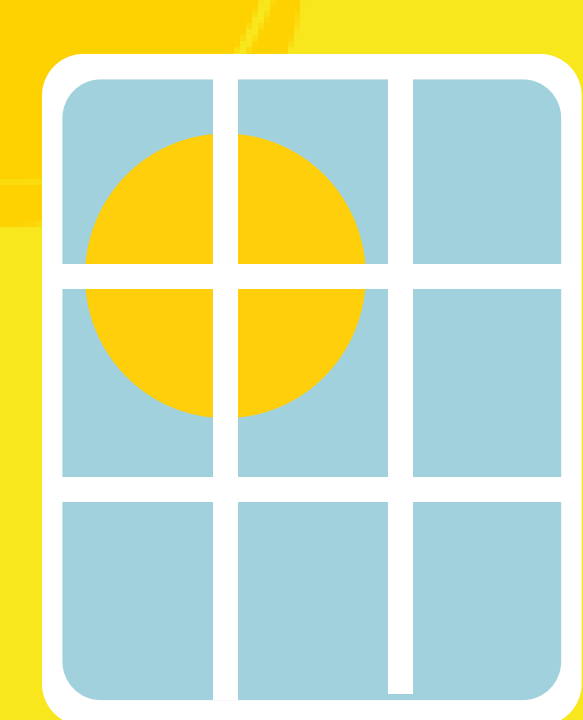
Key

10 students
max

14-16 students
max

26-30 students
max

31-36 students
max



Tues & Thurs Max Student Count at any time from 8:00 am- 4:30pm

Building B (08):



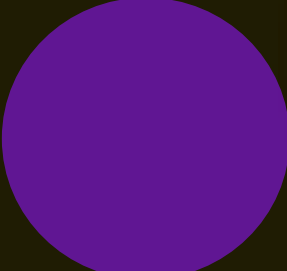

12 students from 9:00 - 10:30 am
27 students from 10:30 - 12:30 pm
12 students from 12:30 - 1:00 pm
15 students from 1:30 - 4:20 pm

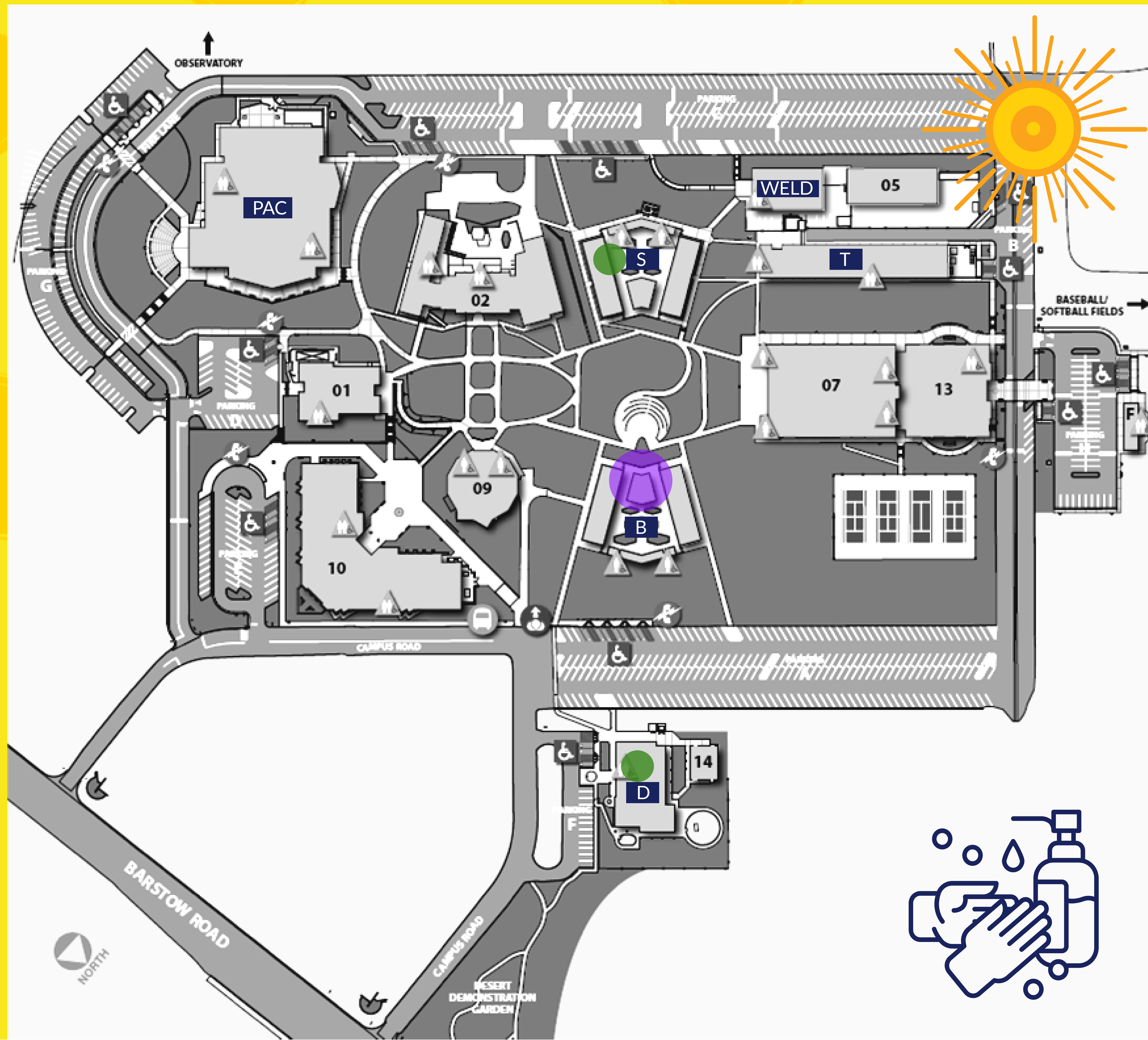
Building D (11):

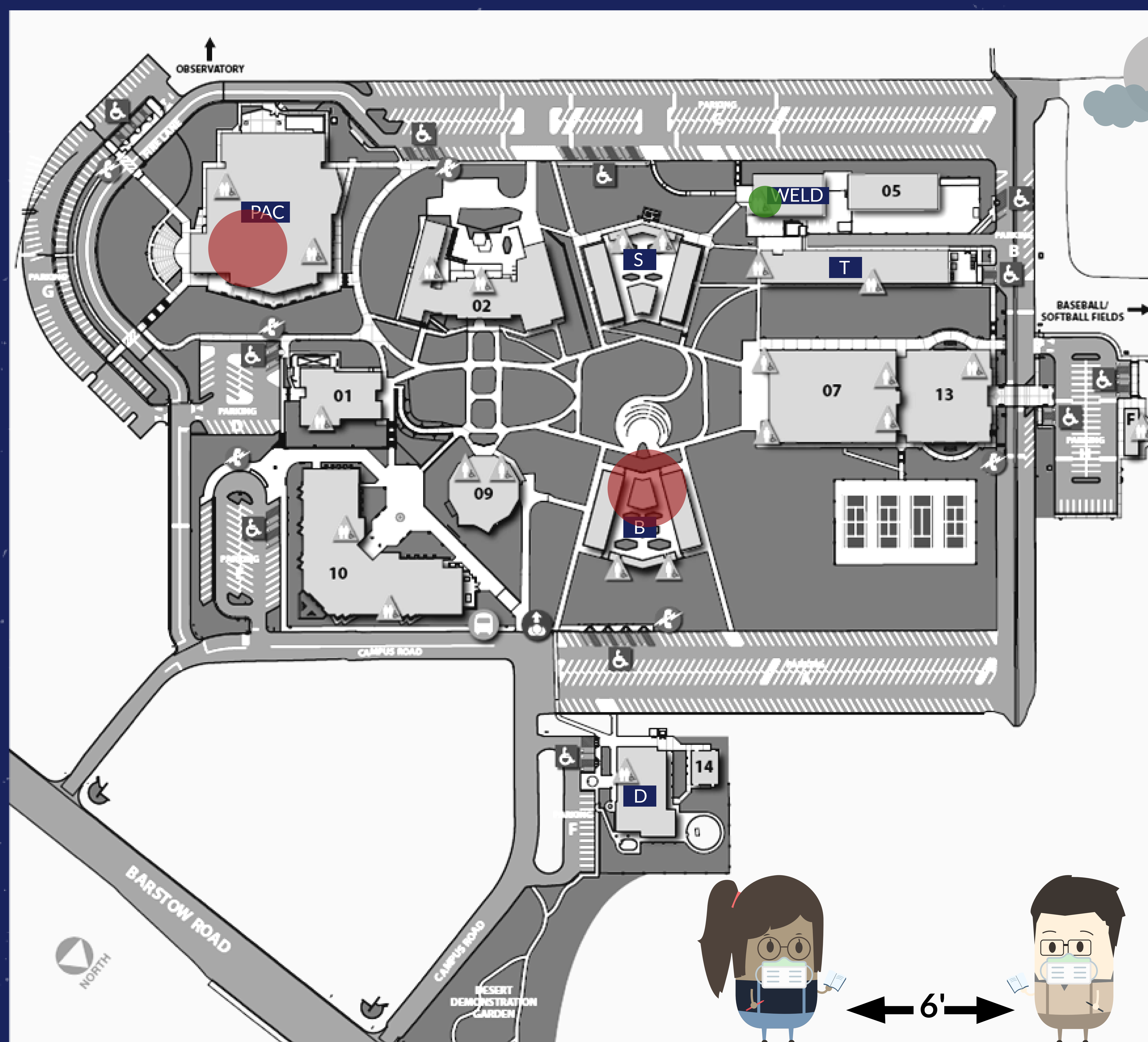
15 students from 9:00 - 3:50 pm

Building S (03):

16 students from 1:30 - 4:20 pm

Key	
	10 students max
	14-16 students max
	26-30 students max
	31-36 students max






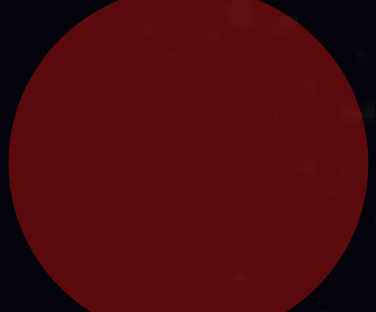


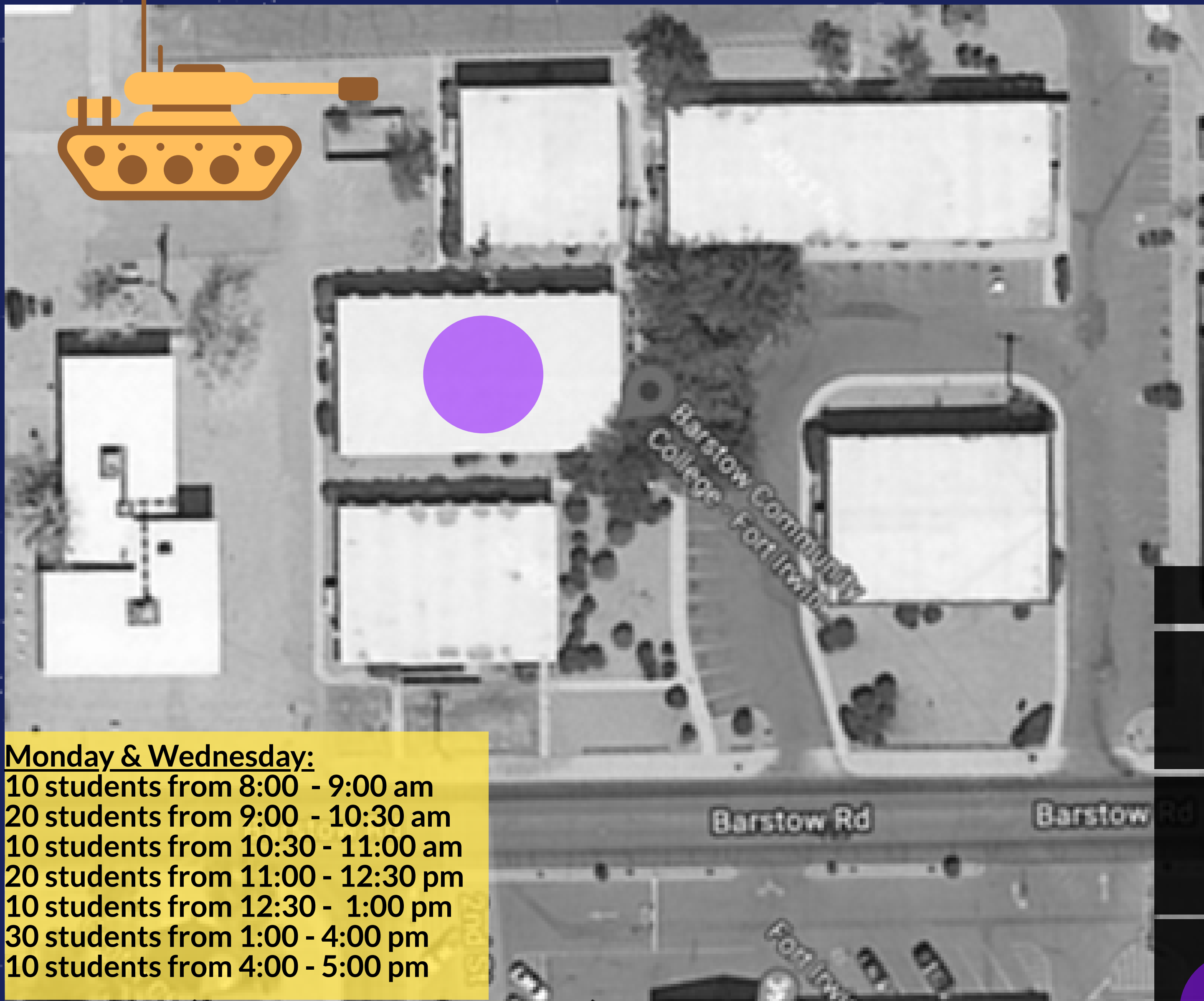
Tues & Thurs Max Student Count at any time from 4:30 - 8:50 pm

Building B (08):
31 students from 6:00 - 7:30 pm
15 students from 7:30 - 8:50 pm

Building PAC (12):
20 students from 4:30 - 6:00 pm
35 students from 6:00 - 7:30 pm
15 students from 7:30 - 8:50pm

Building WELD (04):
14 students from 6:00 - 8:50 pm




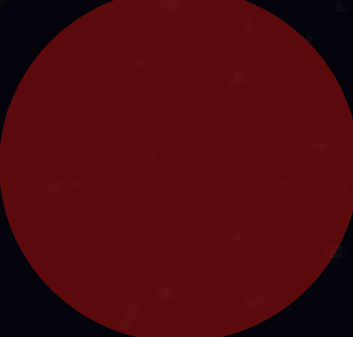
Key	
	10 students max
	14-16 students max
	26-30 students max
	31-36 students max

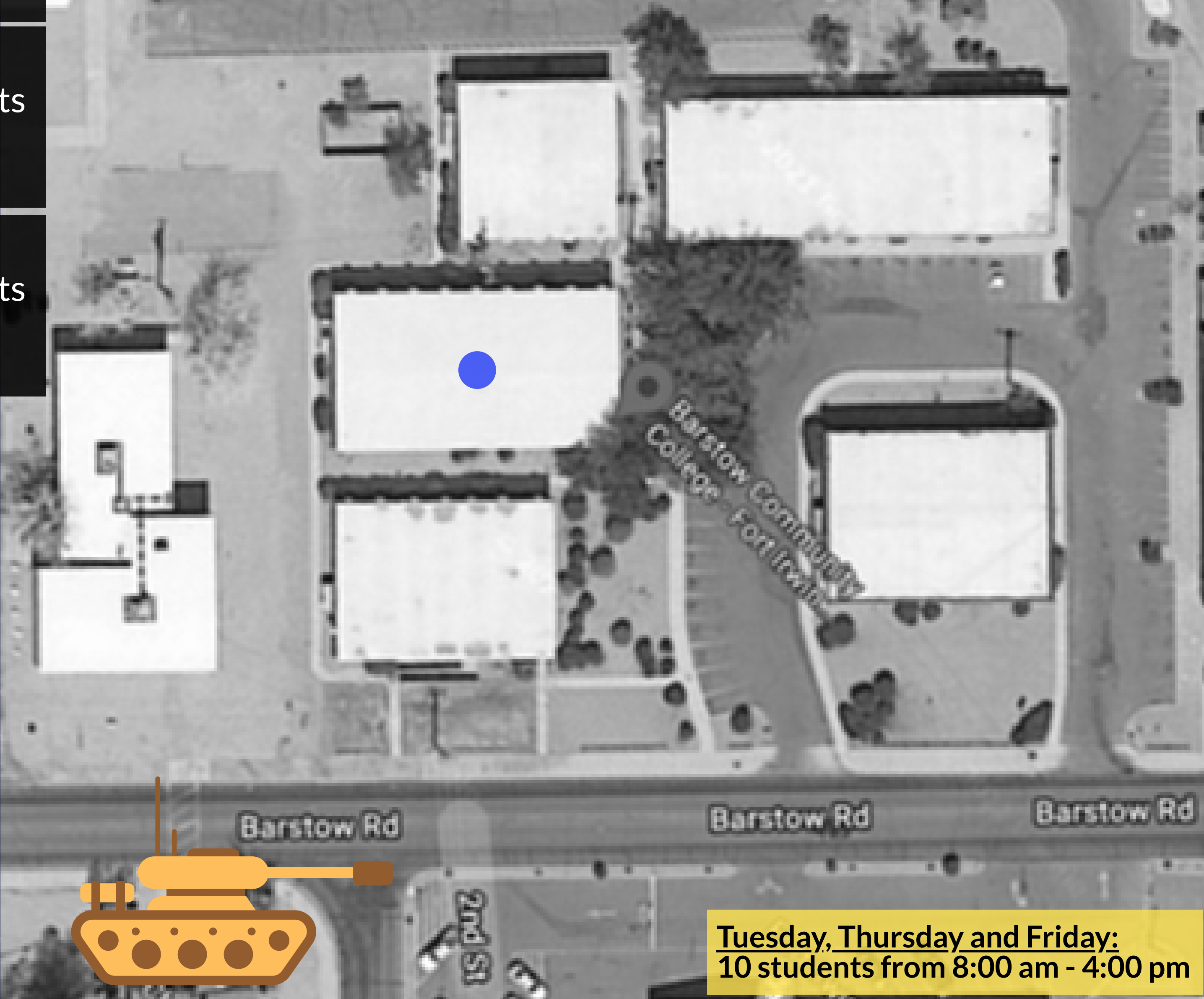
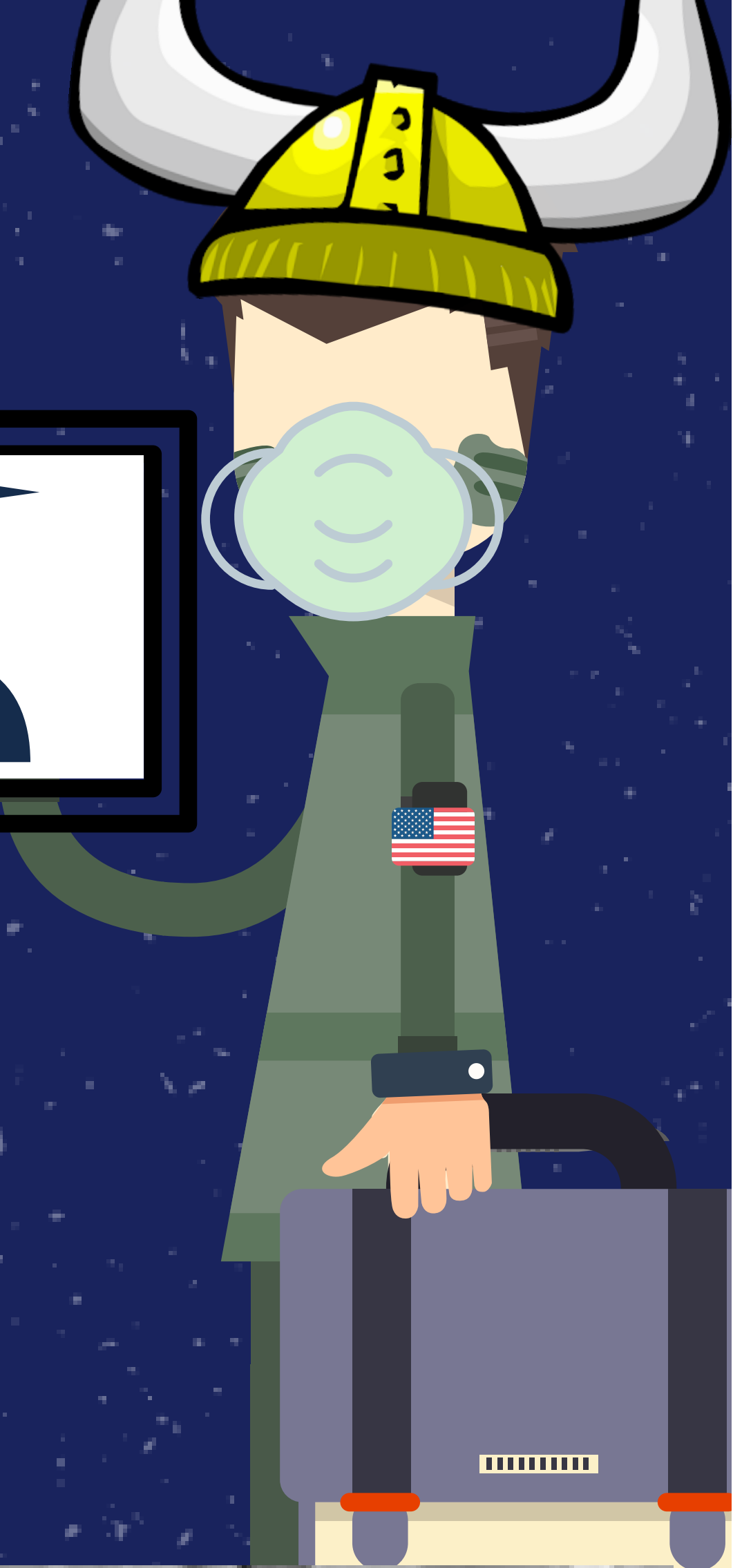
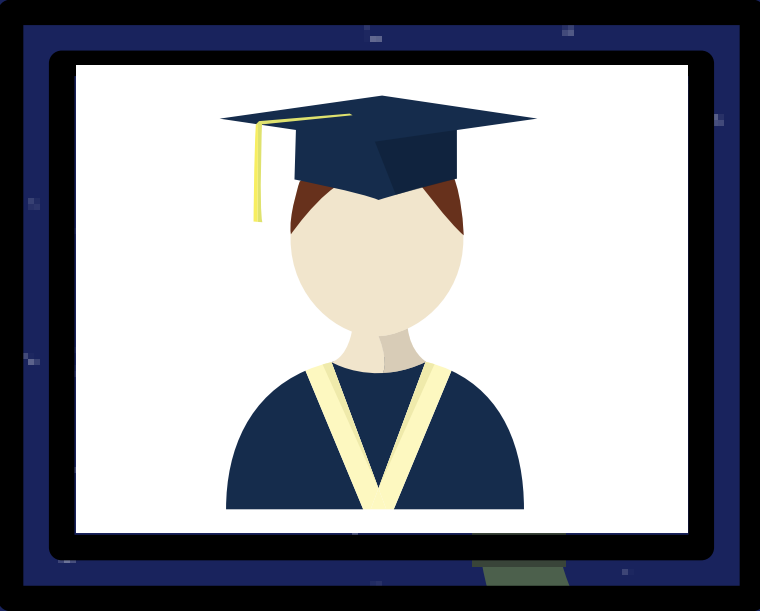


Monday & Wednesday:
10 students from 8:00 - 9:00 am
20 students from 9:00 - 10:30 am
10 students from 10:30 - 11:00 am
20 students from 11:00 - 12:30 pm
10 students from 12:30 - 1:00 pm
30 students from 1:00 - 4:00 pm
10 students from 4:00 - 5:00 pm

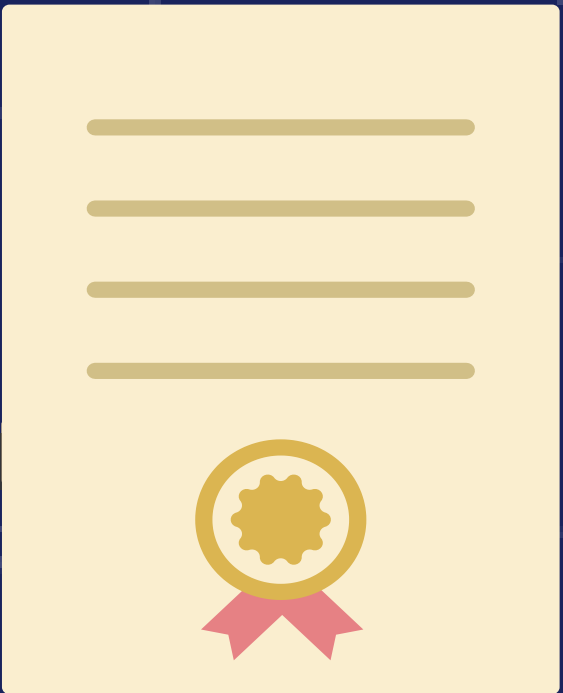
Fort Irwin Campus

Max Student Count

Key	
	10 students max
	14-16 students max
	26-30 students max
	31-36 students max



Tuesday, Thursday and Friday:
10 students from 8:00 am - 4:00 pm





Main Campus:

Max amount of students Monday -Thursday from 8:00 am - 4:30 pm on campus: 46

Max amount of students Monday - Thursday from 4:30 pm - 8:50 pm on campus: 85

Max Students on campus on Friday are 20 from 4:30 pm - 7:15 pm in Building 12 (PAC) for IMMT.

Fort Irwin Campus:

Max amount of students Monday and Wednesday on campus: 30

Max amount of students Tuesday, Thursday, or Friday on campus: 10



**Data Collected, Compiled and Analyzed by:
the Office of Institutional Research**