

# Comparative Analysis of Goals and Metrics



# Preface

Since the California Community College Board of Governors adopted the Student Success Task Force Recommendations in January 2012, the Chancellor's Office has been enlisting the assistance of faculty, student, staff and administrators to develop policies and procedures for these recommendations.

From this effort, the Chancellor's Office proposed metrics centered on five primary goals: Success, Equity, Student Services, Efficiency, and Access.

The California Community College System Goals is a series of statewide measure and goals that are aligned with student success. They are aligned with other Task Force recommendations as well as the following legislation: The Student Success Act (SB1456) and The Student Transfer and Achievement Act (SB1440).

Each College is required to adopt a goals framework and CCCCO will post them on its website before July 1, 2015.

# Metrics

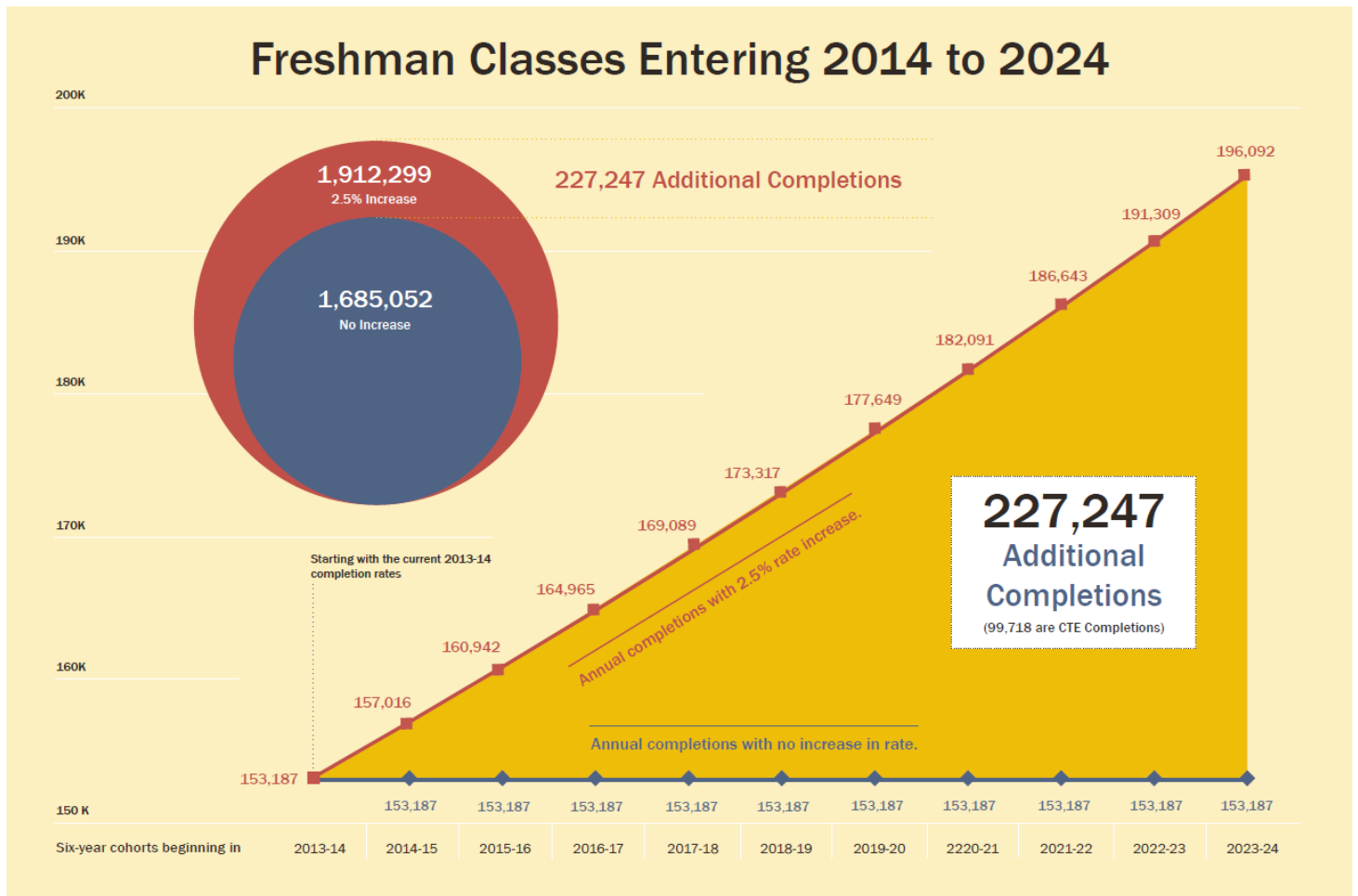
The metrics that are to be adopted for the CCC System Goals are:

1. Student Success Metrics
  - a. Degree and Certificate Completion Rates
  - b. Math and English Remedial Rates
  - c. CTE Completion Rate.
  - d. Associate Degrees for Transfer (AA-T and AS-T) Awarded.
2. Equity (Index above 0.8)
  - a. Equity in Completion Rate among Race/Ethnicity.
3. Student Services
  - a. Percentage of Students with an Education Plan.
4. Efficiency
  - a. Number of FTES Spent per Outcome within Six Years.
5. Access
  - a. Participation Rate (Students 18-24 per 1,000 of the same age pop)
  - b. Participation Rate among Race/Ethnicity

# Growth

This chart shows the system-wide goals set by the Board of Governors for the freshmen classes entering in 2014 through 2024.

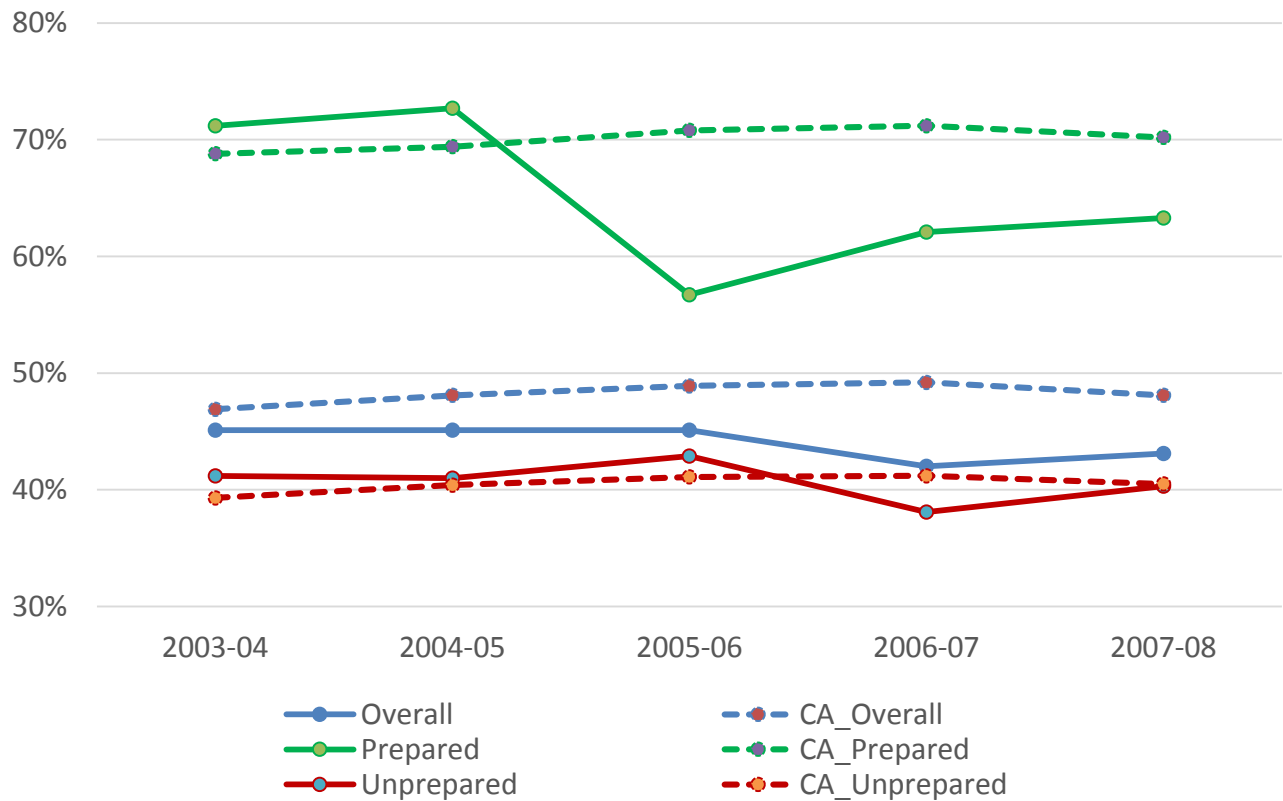
With a modest increase of 2.5% annually, there will be 227,247 additional completions within the next 11 six-year cohorts, starting in 2013-14. Among these additional completions, 99,718 are from Career Technical Education.



# Completion Rates

This chart shows the system-wide goals set by the Board of Governors for the freshmen classes entering in 2014 through 2024.

With a modest increase of 2.5% annually, there will be 227,247 additional completions within the next 11 six-year cohorts, starting in 2013-14. Among these additional completions, 99,718 are from Career Technical Education.



	Overall	CA_Overall	Prepared	CA_Prepared	Unprepared	CA_Unprepared
2003-04	45.10%	46.90%	71.20%	68.80%	41.20%	39.30%
2004-05	45.10%	48.10%	72.70%	69.40%	41.00%	40.40%
2005-06	45.10%	48.90%	56.70%	70.80%	42.90%	41.10%
2006-07	42.00%	49.20%	62.10%	71.20%	38.10%	41.20%
2007-08	43.10%	48.10%	63.30%	70.20%	40.30%	40.50%