

# How to use VPN/Remote Desktop

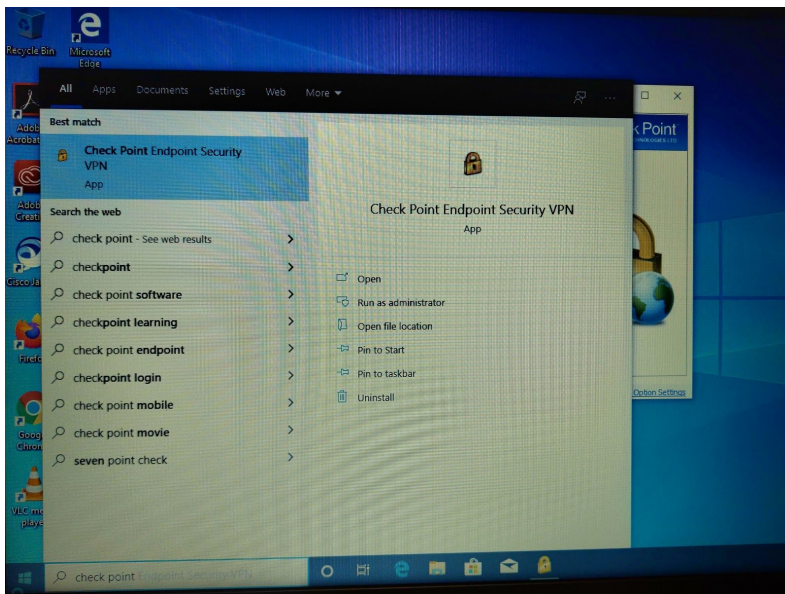
## Step 1

Do you see the Yellow Lock ?



## Step 2

If you do not see the lock please go to your start bar and type CheckPoint .**If you see the lock go to step 3**

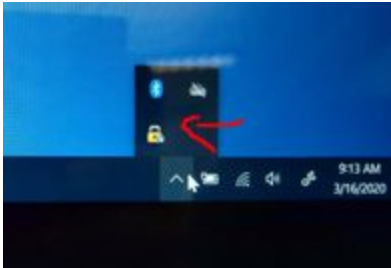


Then click the checkpoint app

At this point you should see the yellow Lock like in the first picture .

# How to use VPN/Remote Desktop

## Step 3



Now that you have the lock right click the lock .



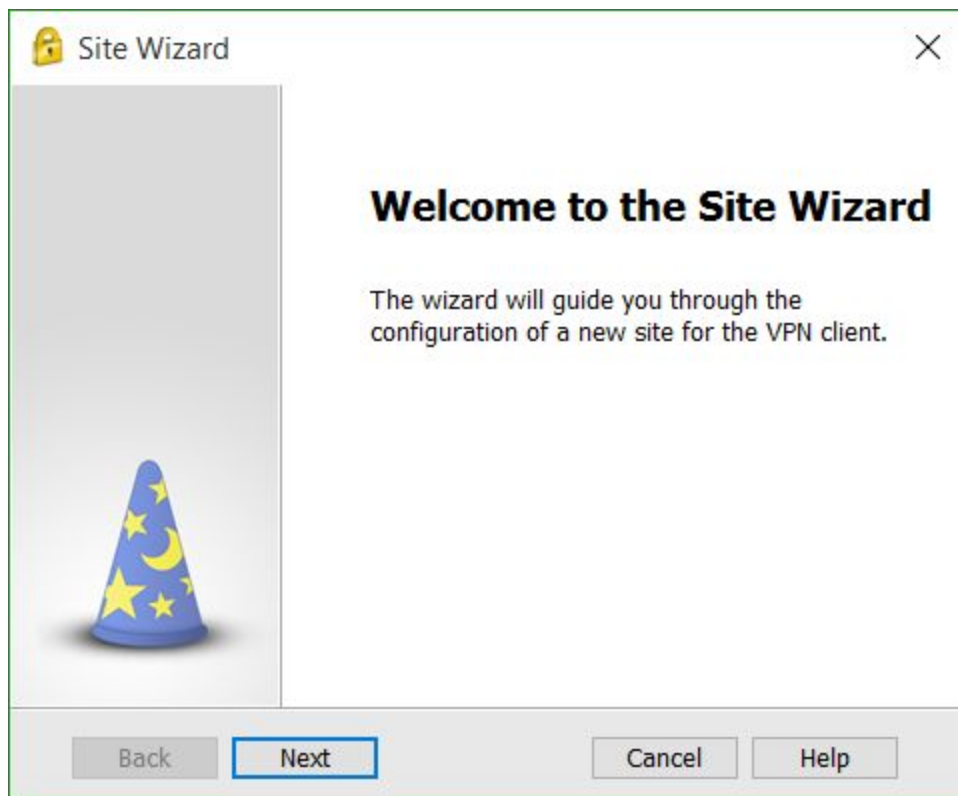
Please click connect .

# How to use VPN/Remote Desktop

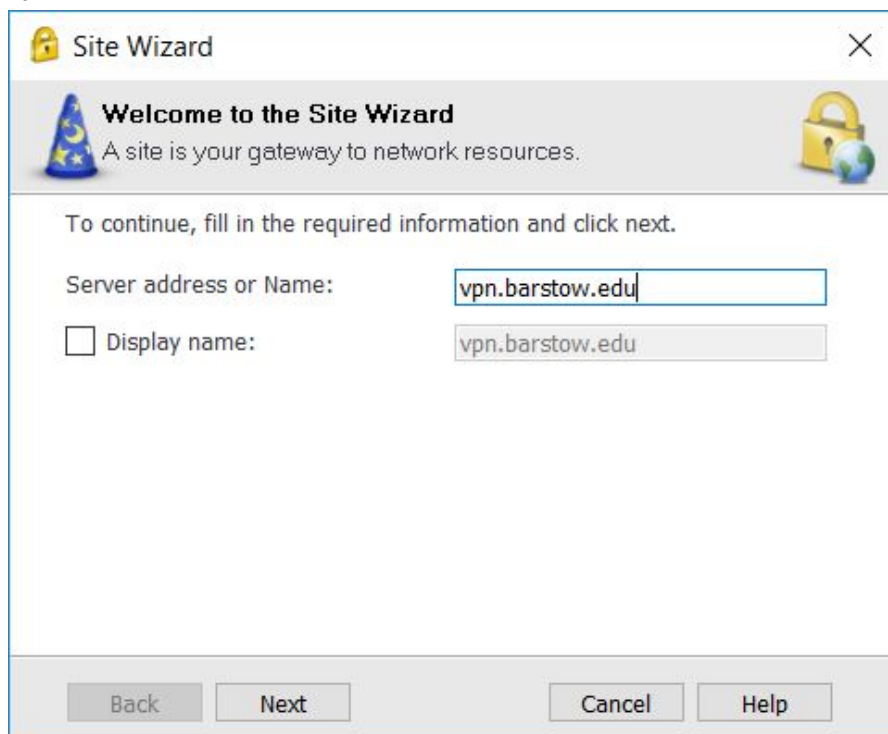
## Step 4

Did it ask you to configure a site ? if no skip to **step 5**

If it asked you to configure site please click next to get to the setup wizard .

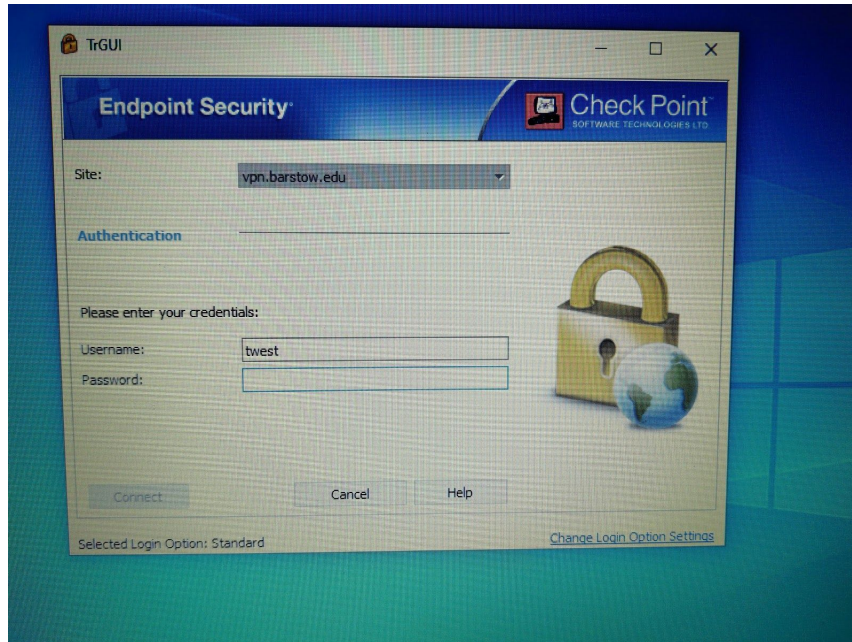


Type the BCC VPN address, **vpn.barstow.edu**



# How to use VPN/Remote Desktop

## Step 5



Once you are configured the VPN you will login using your username and password that you would normally use for work .

Once you logged in successfully you will see a status bar fill up and you will hear a ring to let you know you're connected . it is at this point that you are connected to the VPN

If you cannot get this to work please **Call 760-252-2411 ext 7000** or email [helpdesk@barstow.edu](mailto:helpdesk@barstow.edu)

Please give us as much info as possible in the email such as which step failed or the error code message .

